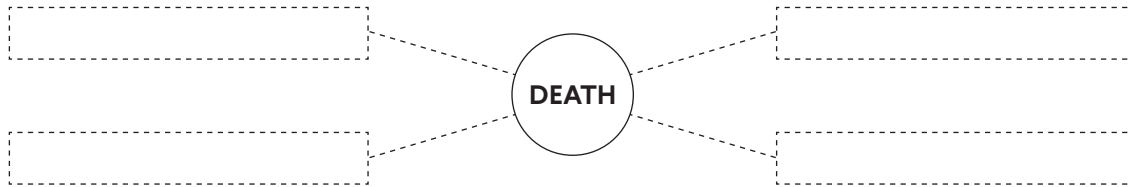


life and death in the history of the Earth

life versus death / worksheet for the guided programme accompanying the exhibition Death in the New Building of the National Museum for secondary schools

1. What comes to your mind when you hear the word death? Put your ideas (one word) into the mind map. You can develop it a bit more, draw more branches and then join them.



2. What is the origin of fossils? What are the processes that need to take place?

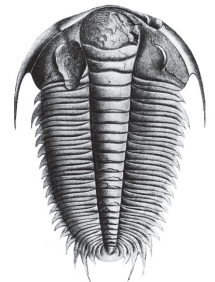
1

2

3

4

5



3. Put at least two body features that predestined the predators to the life of hunting into their boxes (e.g. claws, beaks etc.) and mention the way in which they hunt their prey.

the Siberian tiger	the Nile crocodile	the Eurasian wolf

4. Fill in the gaps in the text:

Lucy was found _____ (when) and immediately caused a sensation. She was found in African _____ (country) and comes from the times of _____ millions years ago. She belonged to the _____ species. Up to _____ % of the skeleton has been preserved really well. She was named after the song of the music band _____, which is called _____.

burying and funeral rites

5. Fill in the chart alongside the lines:

(grave – person)	(when – period) Palaeolithic-Gravettien	(grave – form)
(grave – arrangement) under a mound	(when – period)	(who)
(who)	(when – period) Neolithic – mid 6th millenium	(situation of the body) crouched skeleton
(what)	(what it contains) ashes	(when – period) Bronze Age
(what) mummy	(when – period)	(who)
(what) stones on eyes	(when – period)	(grave – form)

6. The term eschatology means:

- a) memories or memoirs of usually important public figures
- b) evaluation of the life and deeds of a dead person, posthumous memory of the person
- c) teaching about the last things of a man, notions of the afterlife destiny of a man

7. What is the message hidden in these pairs of pictures?



8. Cross out the parts of the sentences that are not true:

Funeral textiles are unique pieces of evidence that tell stories about long distance business journeys, about using different materials, about everyday clothes of the people living below the castles, about craftsmanship and skills, about fashion, about clothing in prehistoric times, about wealth, about the life of society at the Prague castle.

9. Why were ossuaries established?

- a) They are places for storing bones from old and unused graves.
- b) Their only aim was to be a work of art.
- c) They were established to do anthropological research.



10. Guess the meaning of the Latin phrase “Ecce Mors!” As a clue you can use the following anagram, you will obtain the last two letters when you write down the number in the brackets using Roman numerals. The answer consists of two words.

HAHOTEBED(550)

11. Name at least three towns where we could find an ossuary these days.

12. Think about the below mentioned statements or questions in each “circle of the exhibition” and make a note about your opinions. Furthermore try to put down at least one association which links the topic to your previous experience and experiences (e.g. you saw a film, you read a book, you were talking about it to your friends, parents, at school etc.).

at the entrance

Everybody had his time to spend in this world assigned a long time ago. _____ → **agree – disagree**

Associations

the dead teach the alive / autopsy room

What can the living learn from the dead?

Associations

murders

In what particular situations does the contemporary society decide legally about the death and life of an individual?

Associations

executions and victims, death penalty in the past

Execute but in a humane way! _____ → **agree – disagree**

The relationship to executions is culturally and historically determined. _____ → **agree – disagree**

Associations

wars

If there were no wars, our planet would be overcrowded! _____ → **agree – disagree**

Associations

suicides

Those who commit a suicide are cowardly to live their life. _____ → **agree – disagree**

Do we have the right to condemn suicides based on laws of ethics? _____ → **agree – disagree**

Is self-sacrifice for higher aims an act of heroism?

Associations

hospices

Until when do you plan to postpone the worries about your old age?

Associations

solve the mystery of life and death!

- a) Thanks to the death of ancient creatures we can learn about their .
- b) The science dealing with the organisms in the past geological periods of the Earth is called .
- c) Which animal is said to have the shortest life? .
- d) What is the name of the science that deals with (apart from other things) the way people were buried thousands years ago? .
- e) The way of burying when the remains of the dead were burnt and then buried underground is called .
- f) Jewellery, crown jewels and funeral textiles used to be common in the royal .
- g) Apart from the archaeological sources, also the inform us about the relationship of a man to death since the Early Middle Ages.
- h) In a number of cultures people tried to provide "life after life", i.e. for their dead by performing the funeral rites.
- i) What are the names of various vessels into which the dead are interred? The clues are that the first used to be common in Ancient Egypt and the other is still used in our country nowadays. and .
- j) The catholic mass for the dead is called .
- k) The traditional language of these masses has been since the Middle Ages.
- l) The rules of Jewish funeral rites are included in the Torah, also called the Law of .
- m) It is prohibited to burn the dead within the religion called .
- n) The last will is also called the , and the rules are nowadays stated in the code.
- o) The place where it is nowadays possible to scatter the ashes of the dead is called a for scattering.
- p) Many of the natural catastrophes that bring death are caused by the , such as water, fire and gale.
- q) Cremation is a way of the dead and it was legally permitted in our country in 1919.