

ANTONÍN DVOŘÁK IN PHOTOGRAPHS

WORKSHEET FOR THE EXHIBITION



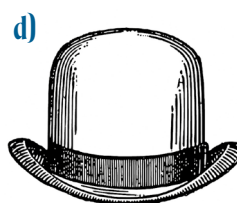
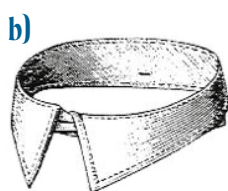
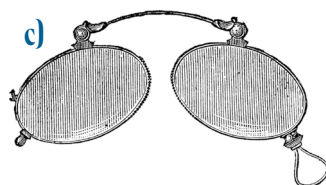
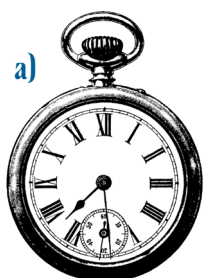
**NATIONAL
MUSEUM**
of the Czech Republic

1. Write down the names of the people in the photographs:



.....

2. Label the pictures with the names of clothing items and accessories worn in Dvořák's time.



3. Inside the black display case, you will find 2 types of early cameras.
Do you know what they are called?

..... and

4. What was used in cameras before photographic film was invented?

.....

5. Fill in the blanks with the correct words *positive* and *negative*.

In photography, a is a film or glass plate that holds an image created by exposing light-sensitive material in a camera and developing it.

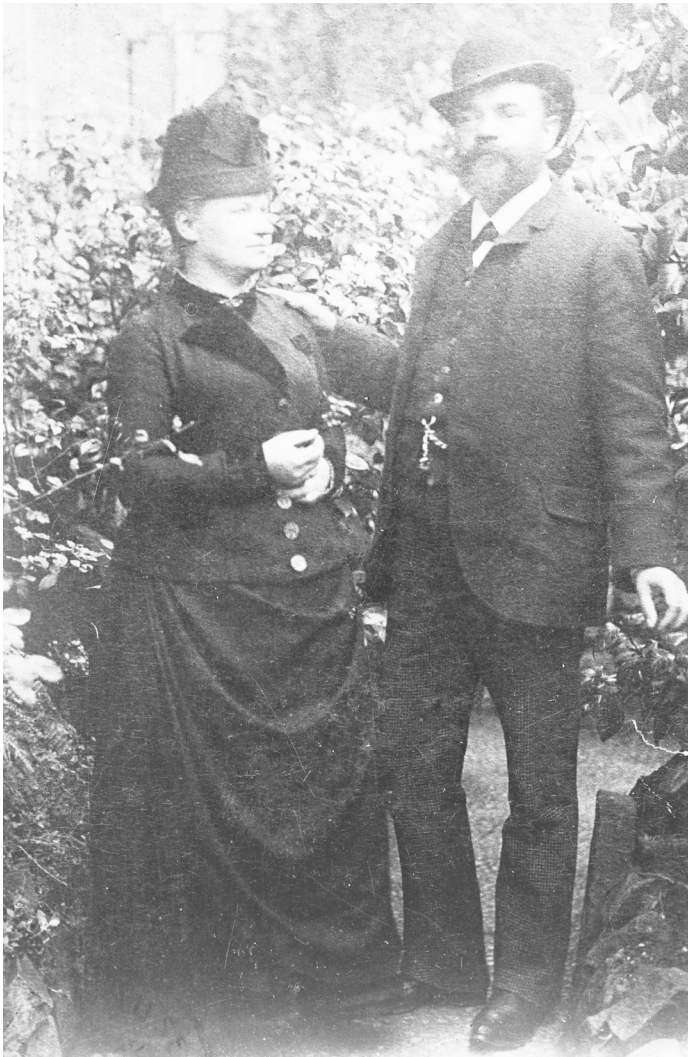
A is the term for the normal image as we see it with the human eye.

6. What is a stereoscopic viewer?

You can try one out in the exhibition on the museum's ground floor.

- a) a viewer through which one can see in two directions simultaneously
- b) a viewer which displays stereoscopic photos in 3D
- c) a viewer which plays sound from the photo as you look at the image

7. Colourization is the technique of adding colour to a black and white photograph to enhance its realism. Take the crayons from the drawer in the back room and bring the photo to life with colour.



Correct answers

- 1. Anna and her son Antonín, Antonín Dvořák, the daughters Magda and Ottilie
- 2. a) pocket watch b) collar c) pince-nez d) bowler hat e) hat pin
- 3. travel camera, stereoscopic camera
- 4. glass plate
- 5. negative, positive
- 6. b)