

RESEARCH PAPER

A review of the types of Lycaenidae species (Lepidoptera) described by Napoleon Manuel Kheil deposited in the collection of the National Museum of the Czech Republic

Jan ŠUMPICH¹⁾ & Zdeněk WEIDENHOFFER²⁾

¹⁾Department of Entomology, National Museum of the Czech Republic, Cirkusová 1740, CZ-193 00 Praha 9 – Horní Počernice, Czech Republic; e-mail: jansumpich@seznam.cz; ORCID: <https://orcid.org/0000-0002-0262-2941>

²⁾Praha 10, Vyzlovská 36, CZ-100 00, Czech Republic; e-mail: zdenekwff@gmail.com; ORCID: <https://orcid.org/0009-0005-4230-7240>

Accepted:
28th May 2025

Published online:
12th August 2025

Abstract. Within the framework of organizing the general collection of tropical butterflies in the National Museum of the Czech Republic, the type material of species described by Napoleon Manuel Kheil is reviewed. The present paper deals with the types in the family Lycaenidae and comprises a total of 11 taxa. Current status, distribution, and photos of adults and genitalia are given for each taxon. Further taxonomic changes were made as a part of the study. *Miletus lahomius* Kheil, 1884, until now considered a subspecies of *Logania marmorata* Moore, 1884, is transferred from the genus *Logania* Distant, 1884 to the genus *Allotinus* C. & R. Felder, [1865] and raised to the species level as *Allotinus lahomius* (Kheil, 1884) comb. & stat. nov., which has priority over *L. marmorata*; as a result, all its existing subspecies are reclassified as subspecies of *A. lahomius*: *Allotinus lahomius lahomius* (Kheil, 1884), comb. & stat. nov., *Allotinus lahomius damis* (Fruhstorfer, 1914), comb. & stat. nov., *Allotinus lahomius diehli* (Eliot, 1986), comb. & stat. nov., *Allotinus lahomius faustina* (Fruhstorfer, 1914), comb. & stat. nov., *Allotinus lahomius hilaeira* (Fruhstorfer, 1914), comb. & stat. nov., *Allotinus lahomius javanica* (Fruhstorfer, 1914), comb. & stat. nov., *Allotinus lahomius marmorata* (Moore, 1884), comb. & stat. nov., *Allotinus lahomius munichya* (Fruhstorfer, 1914), comb. & stat. nov., *Allotinus lahomius palawana* (Fruhstorfer, 1914), comb. & stat. nov., and *Allotinus lahomius samosata* (Fruhstorfer, 1914), comb. & stat. nov. Taxon *semanga* Corbet, 1940 is transferred from the subspecies level of *Chliaria othona* (Hewitson, 1865) to the subspecies level of *Chliaria tora* (Kheil, 1884) as *Chliaria tora semanga* Corbet, 1940, stat. nov. Taxon *pumilina* van Eecke, 1918 is transferred from the subspecies of *Chliaria tora* (Kheil, 1884) to the subspecies of *Chliaria othona* (Hewitson, 1865) as *Chliaria othona pumilina* van Eecke, 1918, stat. nov. *Tajuria cippus bagus* (Kheil, 1884), is restored to the species level: *Tajuria bagus* (Kheil, 1884), stat. restit. *Deudorix hypargyria* (Elwes, 1893) is downgraded, and *Deudorix hypargyria strephanus* (Druce, 1896) and *Deudorix hypargyria annawarneckae* Schröder & Treadaway, 2013 are transferred to the subspecies of *Deudorix calderon* Kheil, 1884, stat. restit., as *Deudorix calderon hypargyria* (Elwes, 1893), stat. nov., *Deudorix hypargyria strephanus* (Druce, 1896), stat. nov., and *Deudorix calderon annawarneckae* Schröder & Treadaway, 2013, stat. nov., respectively.

Key words. Lepidoptera, Lycaenidae, taxonomy, type material, Nias, Indonesia, Oriental Region

Zoobank: <http://zoobank.org/urn:lsid:zoobank.org:pub:89B87BDE-BB03-47E6-A6CA-FB7AC1670B38>

© 2025 The Authors. This work is licensed under the Creative Commons Attribution-NonCommercial-NoDerivs 3.0 Licence.

Introduction

Napoleon Manuel Kheil (*19.x.1849, Prague – †1.xi.1923, Prague), originally a high school professor, was an enthusiastic entomologist with a special interest in Lepidoptera and Orthoptera. During his lifetime, he gathe-

red an extensive collection of butterflies that are superbly mounted. At his time, it was the most extensive collection of tropical butterflies in the present Czech Republic. At the end of his life, he bequeathed his insect collection to the National Museum in Prague (the current National



Museum of the Czech Republic, NMPC – see e.g. BEZDĚK & HÁJEK 2009, HOVORKA & MACEK 2024). The life and work of N. M. Kheil were discussed in detail by ŠUMPICH & WEIDENHOFFER (2023) along with his complete bibliography and an overview of all taxa described by him. In total, N. M. Kheil described 33 Lepidoptera taxa belonging to the following families: Erebidae (2 taxa), Geometridae (1), Lycaenidae (12), Nolidae (1), Nymphalidae (14), Papilionidae (1), and Pieridae (2). Most of the type material is deposited in NMPC, only the types of the following five species are deposited in the National Museum of Natural Sciences in Madrid, Spain: *Acidalia displicitata* Kheil, 1909 (Geometridae), *Aiteta escaleraei* Kheil, 1909 (Nolidae: Chloephorinae), *Liptena bolivari* Kheil, 1905 (Lycaenidae), *Marbla azami* Kheil, 1909, and *Stracena bolivari* Kheil, 1909 (both Erebidae: Lymantriinae). Type locality of all these taxa is Equatorial Guinea, Cabo de San Juan, Biafra; for more details see KHEIL (1905, 1909) and VIVES (2019).

Kheil's main scientific work was a monograph of the butterfly fauna of the Indonesian island of Nias (KHEIL 1884). This work presented a review of 149 species of butterflies, of which 42 were new to Nias at the time, and 25 species were described as new to science. The type material in Kheil's collection in NMPC has not been studied in detail yet. The only exception is the revision of the holotype of *Taygetis vrazi* Kheil, 1896 (Nymphalidae: Satyrinae) by NAKAHARA et al. (2018). Previous neglect of N. M. Kheil's collection resulted in occasional erroneous identifications of some of Kheil's taxa in some collections. Furthermore, from many papers it appears that the authors did not know the location where Kheil's Lepidoptera collection was housed (e.g. TITE 1963). The aim of this paper is to draw attention to the presence of types of the species described by N. M. Kheil in the NMPC collection and to contribute to the stability of zoological nomenclature on the basis of review of Kheil's type material as well as propose the resulting nomenclatural changes.

Material and methods

Type material. Kheil's type material is preserved in its original undamaged condition. Each specimen has an original locality label with printed 'Nias' and a label containing 'Coll. N. Kheil'. The holotype or selected one or two specimens from each type series were labelled by Kheil with the handwritten 'Orig.'. These specimens were later labelled with 'TYPO' (on white paper) and 'TYPUS' (on purple paper). The origin of these additional labels is unknown. For the type specimens, the exact label data are cited, further specified by our remarks given in square brackets: [p] – preceding text is printed on the label attached to the specimen, [hw] – preceding text is handwritten on the label; unless otherwise indicated, the data are written/printed in black ink on a white label. Separate labels are indicated by a double slash '/' and lines within each label are separated by a slash '/'.

Napoleon M. Kheil described a total of four species on the basis of a single specimen (*Lucia fangola*, *Plebeius kupu*, *Jolaus bagus*, *Deudorix calderon*), but only for *D. calderon* he explicitly stated this fact in the original

description. However, the other three species were also described beyond doubt on the basis of a single specimen, as evidenced by the original arrangement of the collection specimens in Kheil's original collection boxes. The individual species were arranged consecutively, with no vacant space after the named species indicating the possible presence of another specimen. For this reason, all four individuals are recognized here as holotypes instead of being designated as lectotypes.

Specimens and photographic documentation. Pinned specimens were photographed with a Canon 750D camera with a Canon EF-60 mm lens. Preparations of genitalia (in glycerol) were photographed with a Canon EOS 200D camera mounted on an Olympus CX31 stereomicroscope. All photos were edited in Helicon Focus 6.3.5 Pro and Adobe Photoshop CC. Photographs contain numbers of genitalia preparations or photographed specimens according to which it is possible to find these specimens in Lepidoptera collections, various databases or other papers of the author.

The terminology of genital structures follows ELIOT (1973).

The material examined is deposited in the following collections:

BMNH	The Natural History Museum, London, United Kingdom;
NMPC	National Museum of the Czech Republic, Prague, Czech Republic;
ZWPC	Zdeněk Weidenhoffer's collection, Prague, Czech Republic.

Results

Type locality of all Lycaenidae taxa presented in this work is the island of Nias, Mentawai Islands, Indonesia (KHEIL 1884). According to this work, the collection of butterflies on Nias was made during several visits to the island from September 1880 to the end of 1882, in the area around the Dutch possession of Goenong-Sitoli (actually Gunung Sitoli City, 1°17'N, 97°37'E), and in the vicinity of the village of Lapao. Napoleon M. Kheil in his monograph did not name the person who collected butterflies for him for a fee. However, it should be added at this point that the collector was Dr. Pavel Durdík, who worked on the island of Nias as a doctor in the service of the Dutch East India Army in 1880–1882 (DURDIK 1884, POSPÍŠILOVÁ et al. 2010).

Synopsis of the Lycaenidae species described by Napoleon Manuel Kheil

Family Lycaenidae Leach, 1815
Subfamily Miletinae Corbet, 1939
Tribe Miletini Reuter, 1896

***Allotinus lahomius* (Kheil, 1884)**
comb. nov. & stat. restit.

(Fig. 1)

Miletus lahomius Kheil, 1884: 27–28, figs 28–29 (original description).
Logania regina lahomius: FRUHSTORFER (1914a): 23 (new combination).
Logania lahomius: FRUHSTORFER (1916a): 806 (new combination).
Logania marmorata lahomius: CORBET (1940a): 112; ELIOT (1986): 4, 66 (redescription, distribution, key to the subspecies of *L. marmorata*); BRIDGES (1988): VII.249, IX.65 (catalogue).

Type material examined. SYNTYPES (5 ♂♂ 5 ♀♀, NMPC): 1 ♂, ‘Typo [hw] // Nias [p] // Orig. [p, pink label] // Typus [p, red label] // Coll. N. Kheil [p] // [small yellow label without text] // Photo / Gen. prep. / J. Šumpich / 22/157 [p] // ex coll. N. M. Kheil / Coll. National / Museum Prague [p] // Syntype ♂ / *Miletus lahomius* / Kheil, 1884 / labelled by J. Šumpich / & Z. Weidenhoffer, 2025 [p, red label]’ (Fig. 1A).

1 ♂, ‘Typo [hw] // Nias [p] // Orig. [p, pink label] // Typus [p, red label] // Coll. N. Kheil [p] // ex coll. N. M. Kheil / Coll. National / Museum Prague [p] // Syntype ♂ / *Miletus lahomius* / Kheil, 1884 / labelled by J. Šumpich / & Z. Weidenhoffer, 2025 [p, red label]’ (without abdomen).

3 ♂♂, ‘Nias [p] // Coll. N. Kheil [p] // ex coll. N. M. Kheil / Coll. National / Museum Prague [p] // Syntype ♂ / *Miletus lahomius* / Kheil, 1884 / labelled by J. Šumpich / & Z. Weidenhoffer, 2025 [p, red label]’ (one male without abdomen).

5 ♀♀, ‘Nias [p] // Coll. N. Kheil [p] // ex coll. N. M. Kheil / Coll. National / Museum Prague [p] // Syntype ♀ / *Miletus lahomius* / Kheil, 1884 / labelled by J. Šumpich / & Z. Weidenhoffer, 2025 [p, red label]’. One female with the label ‘Photo / Gen. prep. / J. Šumpich / 22/158 [p]’ (Fig. 1B).

Current status. *Allotinus lahomius* (Kheil, 1884) comb. nov., valid species (see Remark).

Distribution. Indonesia: Nias (KHEIL 1884), ?Sumatra (ELIOT 1986).

Remarks. Classification in the genus *Allotinus* C. & R. Felder, [1865] follows SEKI et al. (1991).

The description of *Logania marmorata* Moore, 1884 was published on 30 June 1884 (cf. title pages of *Journal of the Asiatic Society of Bengal*, Vol. LIII). Kheil’s work was published in 1884 without further specification of the publication date, only the author’s preface is dated at the end of February 1884. However, in the same year SCHILDE (1884) wrote a review of KHEIL’S (1884) paper, which is dated June 1884. It is obvious that J. Schilde had to read Kheil’s work before F. Moore’s paper was published. For this reason, *Miletus lahomius* Kheil, 1884 has precedence over *Logania marmorata* Moore, 1884, which becomes a junior subjective synonym of the former, though valid in the subspecies rank. Due to this synonymy the change of the nominotypical subspecies is required (ICZN 1999: 47.2), affecting all its existing subspecies according to ELIOT (1986) (see the list below):

Allotinus lahomius lahomius (Kheil, 1884)
Allotinus lahomius damis (Fruhstorfer, 1914), stat. nov.
Allotinus lahomius diehli (Eliot, 1986), stat. nov.
Allotinus lahomius faustina (Fruhstorfer, 1914), stat. nov.
Allotinus lahomius hilaeira (Fruhstorfer, 1914), stat. nov.
Allotinus lahomius javanica (Fruhstorfer, 1914), stat. nov.
Allotinus lahomius marmorata (Moore, 1884), stat. nov.
Allotinus lahomius munichya (Fruhstorfer, 1914), stat. nov.
Allotinus lahomius palawana (Fruhstorfer, 1914), stat. nov.
Allotinus lahomius samosata (Fruhstorfer, 1914), stat. nov.

Allotinus unicolor aphocha (Kheil, 1884)

(Figs 2–3)

Allotinus aphocha Kheil, 1884: 28, fig. 30 (original description).
Allotinus aphocha: FRUHSTORFER (1916a): 810 (checklist).
Paragerydus aphocha: DRUCE (1895): 563 (new combination).
Allotinus (Paragerydus) unicolor aphocha: CORBET (1939): 70 (new combination), ELIOT (1986): 48 (taxonomic review).

Type material examined. SYNTYPES (5 ♂♂ 6 ♀♀, NMPC): 5 ♂♂, ‘Nias [p] // Coll. N. Kheil [p] // ex coll. N. M. Kheil / Coll. National / Museum Prague [p] // Syntype ♂ / *Allotinus aphocha* / Kheil, 1884 / labelled by

J. Šumpich / & Z. Weidenhoffer, 2025 [p, red label]’. Tree specimens were photographed or dissected and have label containing: ‘Photo / Gen. prep. / J. Šumpich [p]’ as prefix for number of a photo or slide made by J. Šumpich and following numbers: 22155, 22180 and 22181 (Figs 2A–B).

1 ♀, ‘Typo [hw] // Nias [p] // Orig. [p, pink label] // Typus [p, red label] // Coll. N. Kheil [p] // [small yellow label without text] // Photo / Gen. prep. / J. Šumpich / 22/157 [p] // ex coll. N. M. Kheil / Coll. National / Museum Prague [p] // Syntype ♀ / *Allotinus aphocha* / Kheil, 1884 / labelled by J. Šumpich / & Z. Weidenhoffer, 2025 [p, red label]’ (Fig. 2C).

5 ♀♀, ‘Nias [p] // Coll. N. Kheil [p] // ex coll. N. M. Kheil / Coll. National / Museum Prague [p] // Syntype ♀ / *Allotinus aphocha* / Kheil, 1884 / labelled by J. Šumpich / & Z. Weidenhoffer, 2025 [p, red label]’. Three specimens were photographed or dissected and have label containing ‘Photo / Gen. prep. / J. Šumpich [p]’ as prefix for number of a photo or slide made by J. Šumpich and following numbers: 22156, 22182 (Fig. 2D) and 22183.

Additional material examined. INDONESIA: [NIAS]: without faunistic details, 2 ♀♀, coll. N. M. Kheil (NMPC) (Fig. 2E); without faunistic details, 2 ♀♀, coll. J. Šrogl (NMPC).

Comparative material examined. *Allotinus unicolor rekkia* Riley & Godfrey, 1921: THAILAND: NAKHON RATCHASIMA PROVINCE: Wang Nam Khio, 14°28’N, 101°55’E, 550 m, 3.xii.2012, 2 ♂♂ 3 ♀♀, Z. Weidenhoffer leg. (ZWPC).

Current status. *Allotinus unicolor aphocha* (Kheil, 1884), subspecies of *Allotinus unicolor* C. & R. Felder, [1865].

Distribution. Indonesia: Nias (KHEIL 1884), ?Bangka Island, ?Batu Island, ?Mentawai Islands, ?Sumatra Island (ELIOT 1986).

Remarks. ELIOT (1986) pointed out in his review paper that it is very difficult to decide which specimens constitute a valid subspecies because of the great range of phenetic variation. He accepted subspecific status based on the study of large series of butterflies stored in BMNH, but highlighted the difficulty or impossibility of identifying a butterfly to a subspecies if the specimen does not bear a locality label. ELIOT (1986) recognised a total of eight subspecies of *A. unicolor*, writing for the subspecies *aphocha*: ‘Differs from subsp. *unicolor* only in that on the underside of the hindwing the postdiscal spot in space 6 is usually placed closer to the spot in space 7. Many specimens are inseparable from *unicolor*, so the subspecies is of doubtful validity’. However, the text in ELIOT’S (1986) work indicated that he did not have the opportunity to study the type material of *A. unicolor aphocha*. For this reason, the distribution of this subspecies as defined by ELIOT (1986) requires future revision.

Allotinus unicolor unicolor was described from Singapore (FELDER & FELDER [1865]), and according to INAYOSHI (1996–2024), it is distributed on the Malay Peninsula from Singapore in the south to Ranong province in southern Thailand; according to ELIOT (1986) also to south Myanmar. North from Ranong across Myanmar to Assam, the subspecies *A. unicolor continentalis* Fruhstorfer, 1913 occurs and in northeastern Thailand, Cambodia and southern Vietnam, there is the subspecies *A. unicolor rekkia* Riley & Godfrey, 1921 (cf. ELIOT 1986, INAYOSHI 1996–2024).

Allotinus unicolor aphocha was described from Nias and is currently treated as the oldest subspecies of *A. unicolor* except the nominotypical one. We have for comparison only collection material from central Thailand (Nakhon Ratchasima Province), which we provisionally assign to the

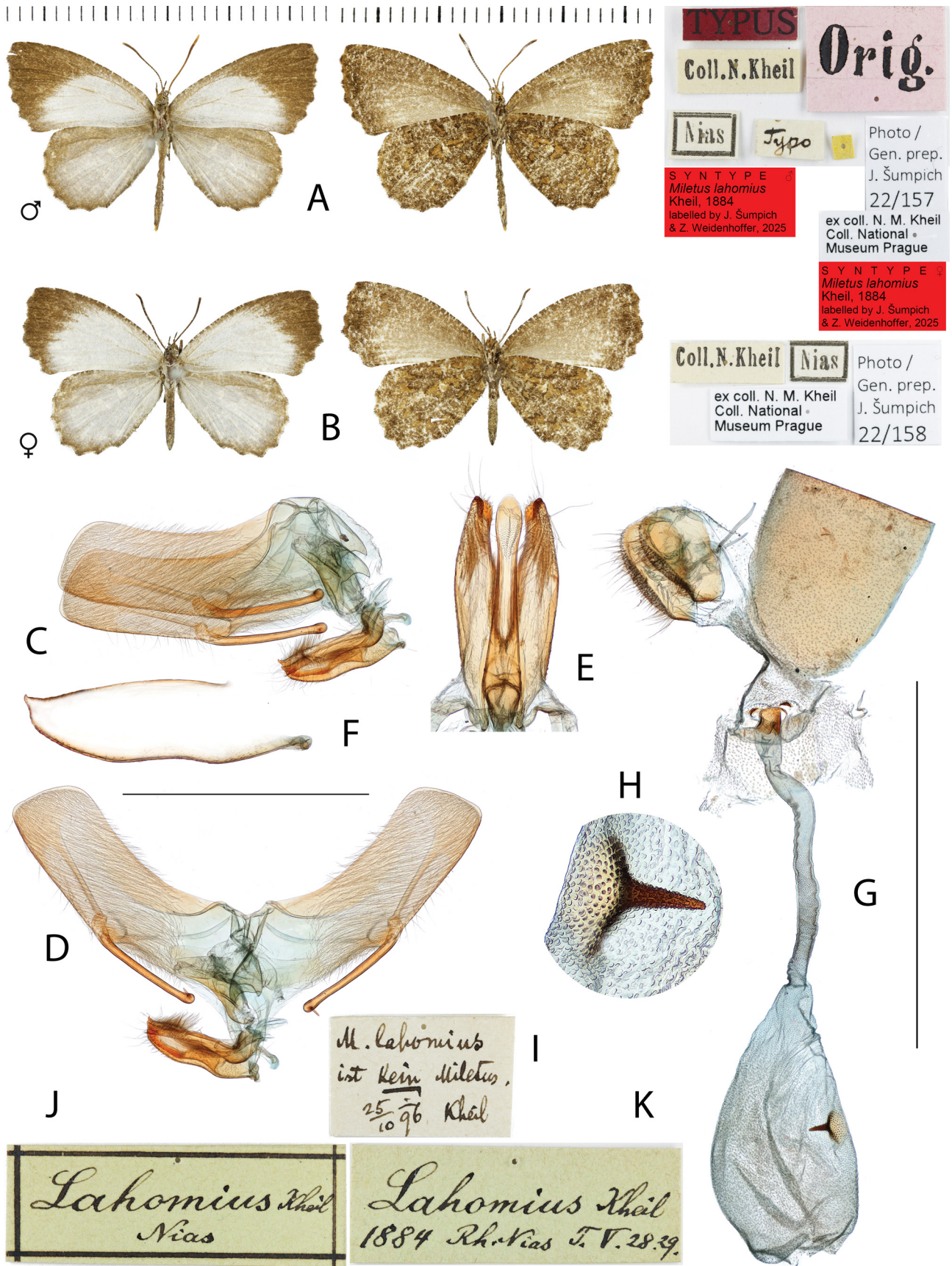


Fig. 1. *Miletus lahomius* Kheil, 1884, syntypes. A – male, dorsal view (left), ventral view (center), labels (right); B – female, dorsal view (left), ventral view (center), labels (right); C – F – male genitalia, gen. prep. JŠ22157: C – lateral view, D – view with open lobes of uncus, E – phallus (enlarged), F – valva (enlarged); G – H – female genitalia, gen. prep. JŠ22158: G – general view, H – detail of signum (opposite view to Fig. 1G); I – K – original labels handwritten by N. M. Kheil placed in his original collection box before the type series: K – reverse side of the label in Fig. 1J. Scale bar 2 mm in C, D and G.

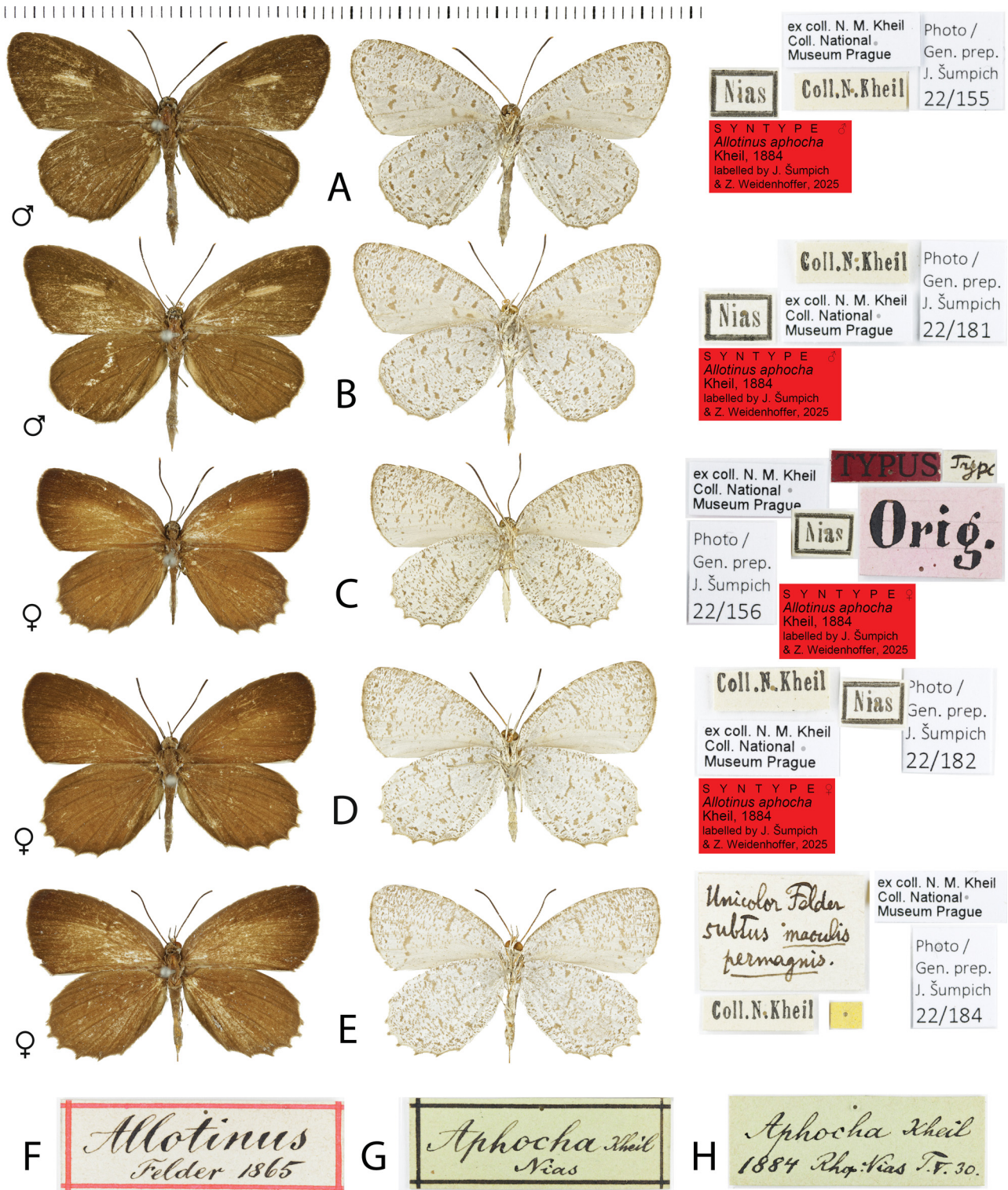


Fig. 2. *Allotinus aphocha* Kheil, 1884. A–D – syntypes, dorsal view (left), ventral view (center), labels (right); E – female identified by N. M. Kheil as *Allotinus unicolor* C. & R. Felder, [1865] from Nias; F–H – original labels handwritten by N. M. Kheil placed in his original collection box before the type series; H – reverse side of the label in Fig. 2G.

subspecies *A. unicolor rekkia*. However, more specimens of all three subspecies mentioned above are depicted by INAYOSHI (1996–2024). Obviously, distinguishing these three subspecies is not easy and in some cases it is impossible. It seems also impossible to point out reliable distinguishing characters in the pattern on the underside of the wings.

However, the *A. unicolor aphocha* differs quite markedly from these three subspecies, and therefore we continue to consider this taxon a valid subspecies of *A. unicolor*. Well visible differences are especially on the upper side of the forewings in females which have reddish tint and instead of a more pronounced discoidal spot, the centre of the

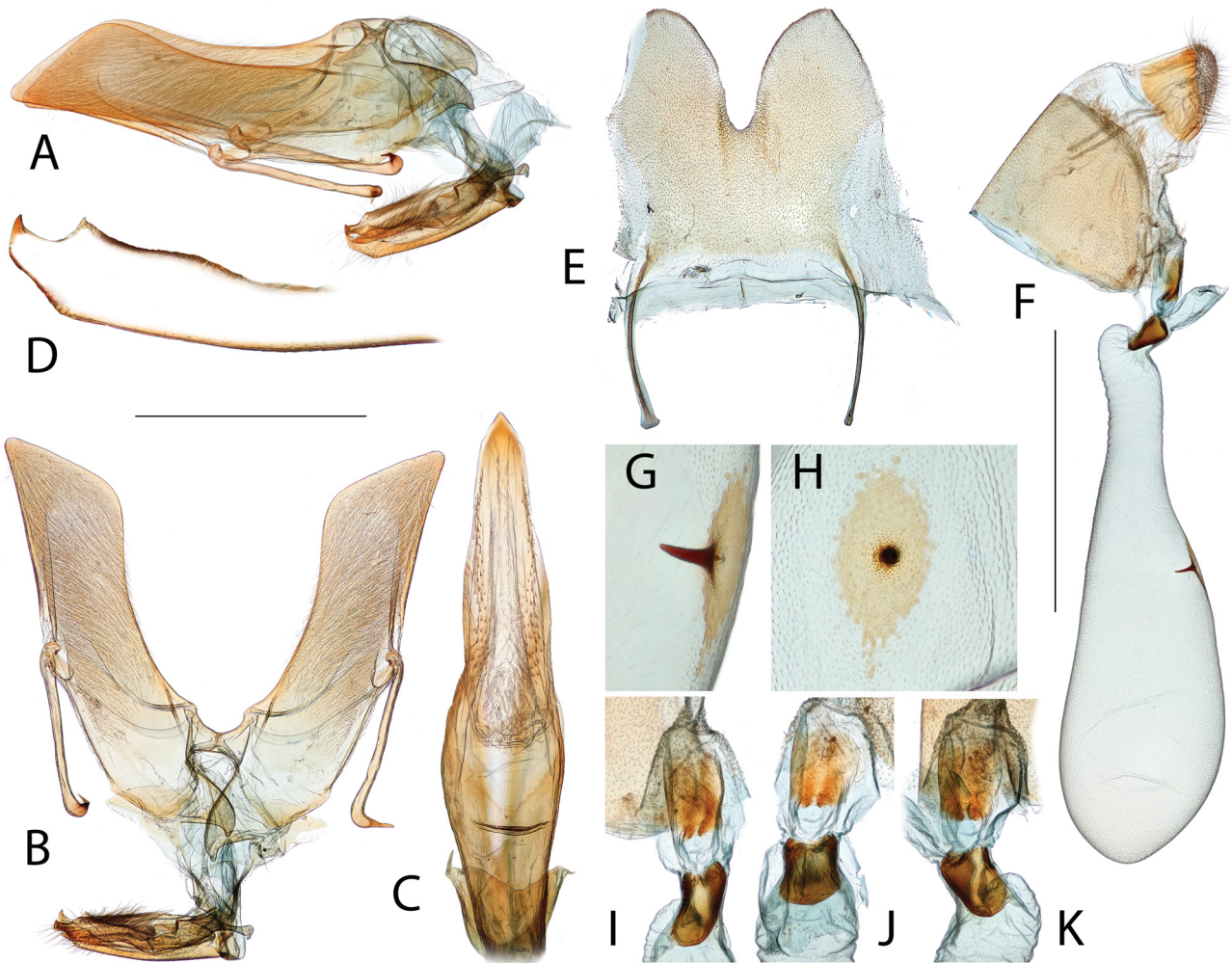


Fig. 3. *Allotinus aphocha* Kheil, 1884, genitalia of syntypes. A–E – male genitalia, gen. prep. JŠ22155: A – lateral view, B – view with open lobes of uncus, C – phallus (enlarged), D – valva (enlarged), E – plate on sternite VIII; F–K – female genitalia, gen. prep. JŠ22156: F – general view, G–H – detail of signum, I–K – detail of antrum area. Scale bar 2 mm in A, B, E and F.

wing is only slightly lighter. Other characters, such as the more markedly serrated hindwing margin or the size and position of the small spots on the underside of the wings, are variable and are not reliable. The distinctly elongated distal part of the great lobe of uncus of the male genitalia may also be characteristic for this subspecies (Figs 3A, B).

KHEIL (1884) published one pair of *A. unicolor* from Nias. There are two other females without locality label in Kheil's collection in NMPC, one of which is identified as '*unicolor* Felder' (Fig. 2E). These two females are not included in the syntype series of *A. unicolor aphocha*, but most probably belong to this subspecies.

Tribe Spalgini Toxopeus, 1929

Spalgis epeus fangola (Kheil, 1884)

(Fig. 4)

Lucia fangola Kheil, 1884: 28, fig. 31 (original description).

Spalgis epius [sic] fangola: FRUHSTORFER (1917a): 75 (new combination).

Spalgis epeus fangola: BRIDGES (1988): IX.118 (catalogue).

Type material examined. HOLOTYPE: ♂ (NMPC), 'Typo [hw] // Nias [p] // Orig. [p, pink label] // Typus [p, red label] // Coll. N. Kheil [p] //

Photo / Gen. prep. / J. Šumpich / 22/169 [p] // ex coll. N. M. Kheil / Coll. National / Museum Prague [p] // Holotype ♂ / *Lucia fangola* / Kheil, 1884 / labelled by J. Šumpich / & Z. Weidenhoffer, 2025 [p, red label]' (Fig. 4A).

Current status. *Spalgis epeus fangola* (Kheil, 1884), subspecies of *S. epeus* (Westwood, [1851]).

Distribution. Indonesia: Nias (KHEIL 1884), Sumatra (FRUHSTORFER 1917a).

Remarks. FRUHSTORFER (1917a) placed *fangola* as a subspecies of *S. epeus* based on its extremely small size and the very fine net pattern on the underside of the wings.

Subfamily Polyommatinae Swainson, 1827

Tribe Polyommagini Swainson, 1827

Jamides talinga (Kheil, 1884)

(Fig. 5)

Plebeius talinga Kheil, 1884: 29, figs 32–33 (original description).

Lampides talinga: DE NICÉVILLE (1895): 39 (new combination).

Lampides kondulana talinga: FRUHSTORFER (1916a): 10 (new status).

Jamides talinga talinga: HIROWATARI (1986): 126 (new combination).

Type material examined. SYNTYPES (1 ♂ 2 ♀♀, NMPC): 1 ♂, 'Nias [p] // Orig. [p, pink label] // Typus [p, red label] // Coll. N. Kheil [p] //

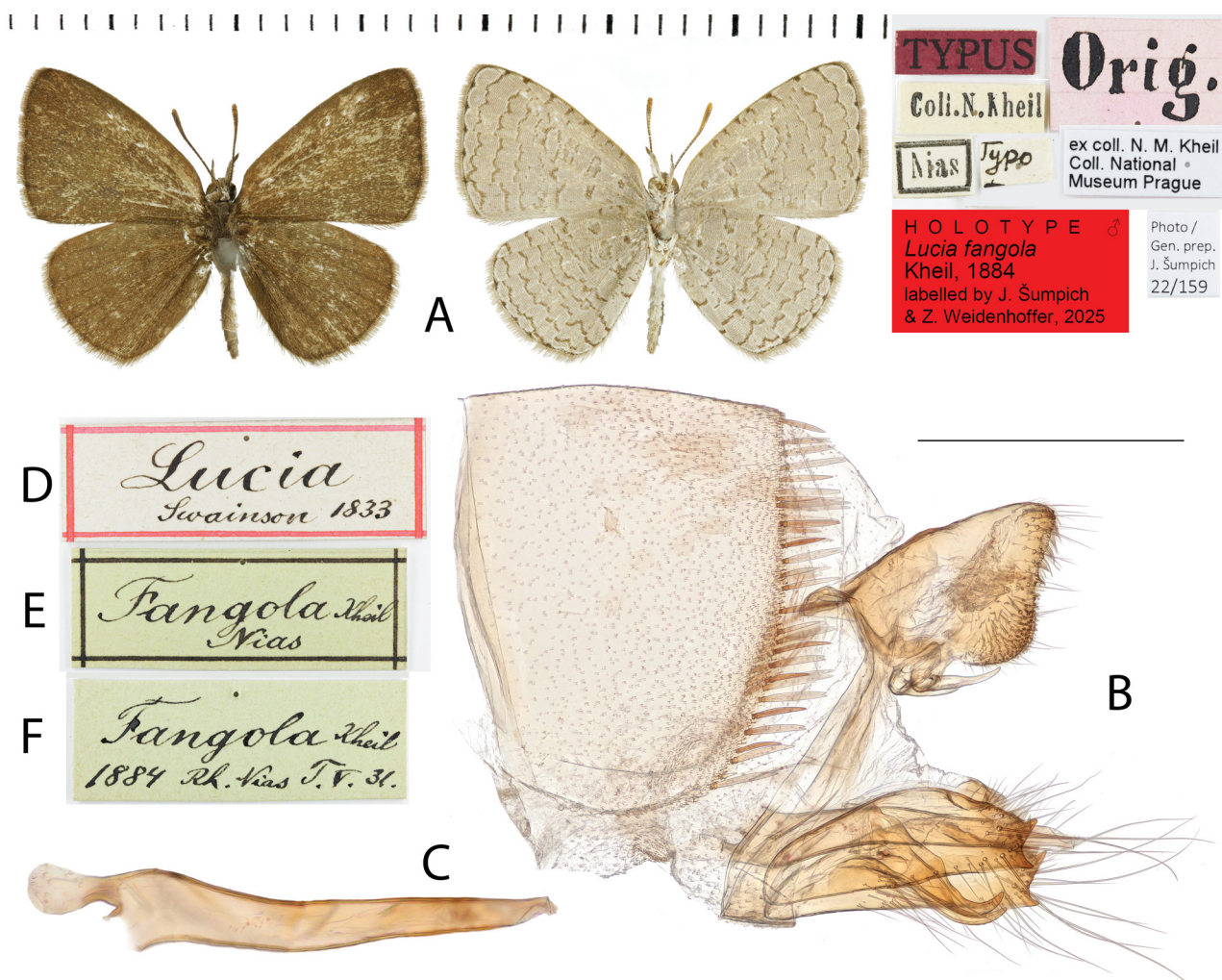


Fig. 4. *Lucia fangola* Kheil, 1884, holotype, male. A – dorsal view (left), ventral view (center), labels (right); B–C – male genitalia, gen. prep. JŠ22159: B – lateral view, C – phallus (enlarged); D–F – original labels handwritten by N. M. Kheil placed in his original collection box before the type series: F – reverse side of the label in Fig. 4E. Scale bar 0.5 mm in B.

// [small yellow label without text] // Photo / Gen. prep. / J. Šumpich / 22/163 [p] // ex coll. N. M. Kheil / Coll. National / Museum Prague [p] // Syntype ♂ / *Plebeius talinga* / Kheil, 1884 / labelled by J. Šumpich / & Z. Weidenhoffer, 2025 [p, red label] (Fig. 5A).

1 ♀, 'Typo [hw] // Nias [p] // Orig. [p, pink label] // Typus [p, red label] // Coll. N. Kheil [p] // Photo / Gen. prep. / J. Šumpich / 22/164 [p] // ex coll. N. M. Kheil / Coll. National / Museum Prague [p] // Syntype ♀ / *Plebeius talinga* / Kheil, 1884 / labelled by J. Šumpich / & Z. Weidenhoffer, 2025 [p, red label] (Fig. 5B).

1 ♀, 'Nias [p] // Coll. N. Kheil [p] // [small yellow label without text] // ex coll. N. M. Kheil / Coll. National / Museum Prague [p] // Syntype ♀ / *Plebeius talinga* / Kheil, 1884 / labelled by J. Šumpich / & Z. Weidenhoffer, 2025 [p, red label]'.

Current status. *Jamides talinga* (Kheil, 1884), valid species.

Distribution. Nias (KHEIL 1884), Sumatra (DE NICÉVILLE (1895), Malaysia (RILEY & CORBET 1938), Thailand (Trang and southward), Langkawi, Borneo (INAYOSHI 1996–2024).

Jamides bochus siraha (Kheil, 1884)

(Fig. 6)

Plebeius siraha Kheil, 1884: 30, fig. 35 (original description).

Lampides bochus siraha: FRUHSTORFER (1916a): 36 (new combination).

Jamides bochus siraha: RILEY & CORBET (1938): 150 (taxonomic revision); D'ABRERA (1986): 643 (taxonomic review).

Type material examined. SYNTYPES (2 ♂♂ 1 ♀, NMPC): 1 ♂, 'Nias [p] // Orig. [p, pink label] // Typus [p, red label] // Coll. N. Kheil [p] // [small yellow label without text] // Photo / Gen. prep. / J. Šumpich / 22/160 [p] // ex coll. N. M. Kheil / Coll. National / Museum Prague [p] // Syntype ♂ / *Plebeius siraha* / Kheil, 1884 / labelled by J. Šumpich / & Z. Weidenhoffer, 2025 [p, red label]'.

1 ♂, 'Nias [p] // Coll. N. Kheil [p] // Photo / Gen. prep. / J. Šumpich / 22/161 [p] // ex coll. N. M. Kheil / Coll. National / Museum Prague [p] // Syntype ♂ / *Plebeius siraha* / Kheil, 1884 / labelled by J. Šumpich / & Z. Weidenhoffer, 2025 [p, red label] (Fig. 6A).

1 ♀, 'Nias [p] // Coll. N. Kheil [p] // Photo / Gen. prep. / J. Šumpich / 22/162 [p] // ex coll. N. M. Kheil / Coll. National / Museum Prague [p] // Syntype ♀ / *Plebeius siraha* / Kheil, 1884 / labelled by J. Šumpich / & Z. Weidenhoffer, 2025 [p, red label] (Fig. 6B).

Current status. *Jamides bochus siraha* (Kheil, 1884), subspecies of *Jamides bochus* (Stoll, [1782]).

Distribution. Nias (KHEIL 1884), Sumatra (FRUHSTORFER 1916a).

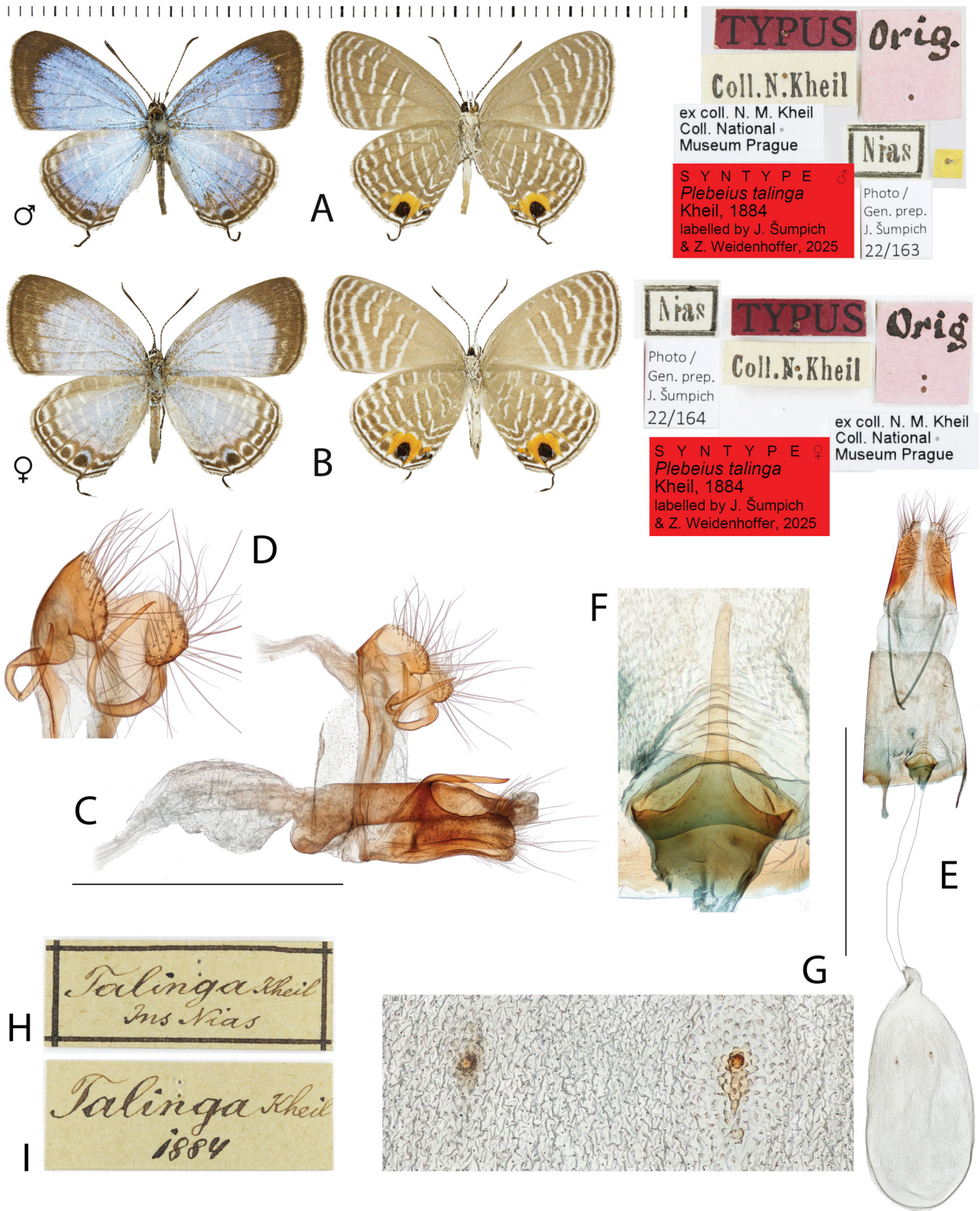


Fig. 5. *Plebeius talinga* Kheil, 1884, syntypes. A – male, dorsal view (left), ventral view (center), labels (right); B – female, dorsal view (left), ventral view (center), labels (right); C–D – male genitalia, gen. prep. JŠ22163: C – lateral view, D – detail of uncus with curved brachium; E–G – female genitalia, gen. prep. JŠ22164: E – general view, F – detail of antrum area, G – detail of signa; H–I – original labels handwritten by N. M. Kheil placed in his original collection box before the type series: I – reverse side of the label in Fig. 5H. Scale bar 1 mm in C and 2 mm in E.

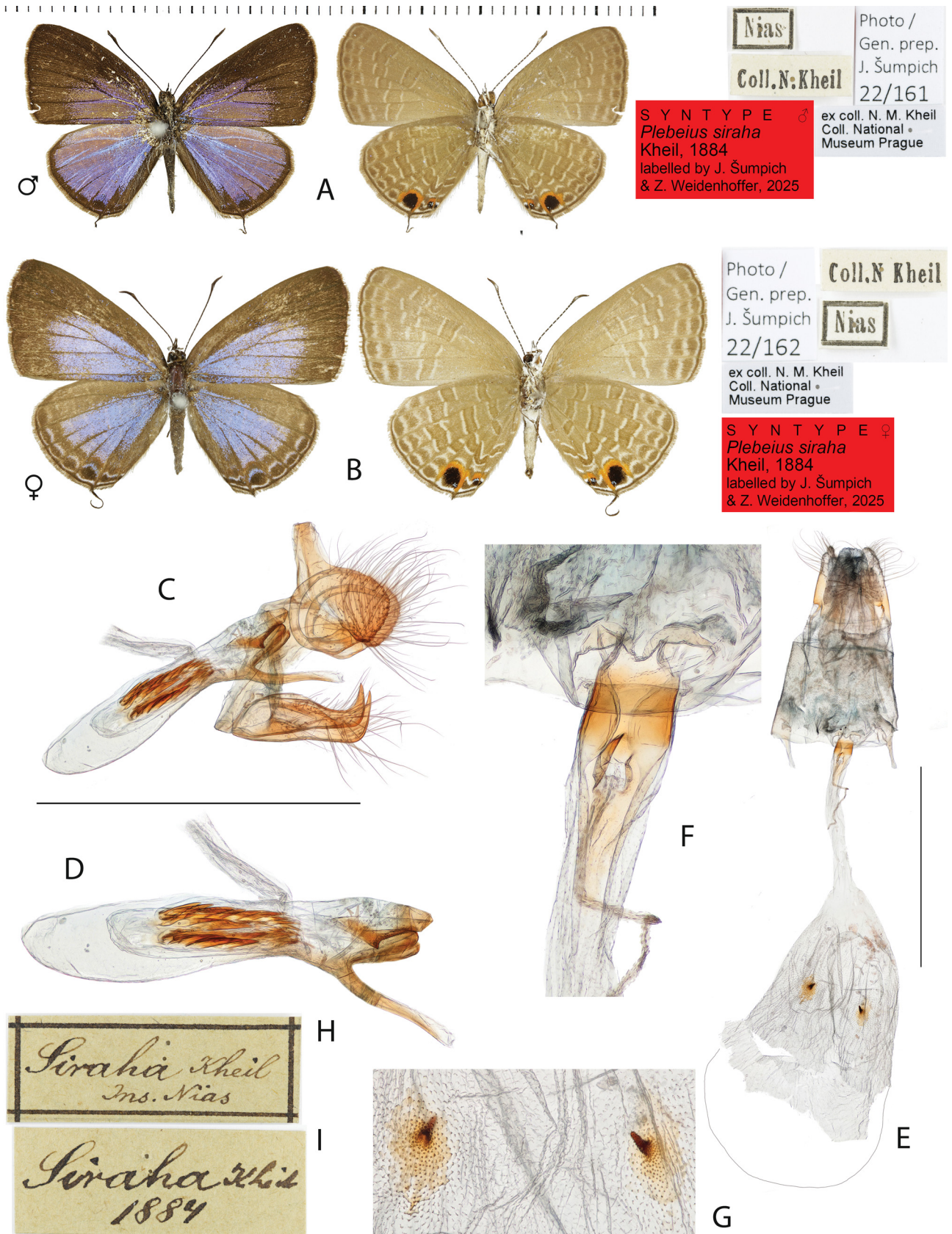


Fig. 6. *Plebeius siraha* Kheil, 1884, syntypes. A – male, dorsal view (left), ventral view (center), labels (right); B – female, dorsal view (left), ventral view (center), labels (right); C–D – male genitalia, gen. prep. JŠ22160: C – lateral view, D – detail of phallus; E–G – female genitalia, gen. prep. JŠ22162: E – general view, F – detail of antrum area, G – detail of signa; H–I – original labels handwritten by N. M. Kheil placed in his original collection box before the type series: I – reverse side of the label in Fig. 6H. Scale bar 1 mm in C and 2 mm in E.

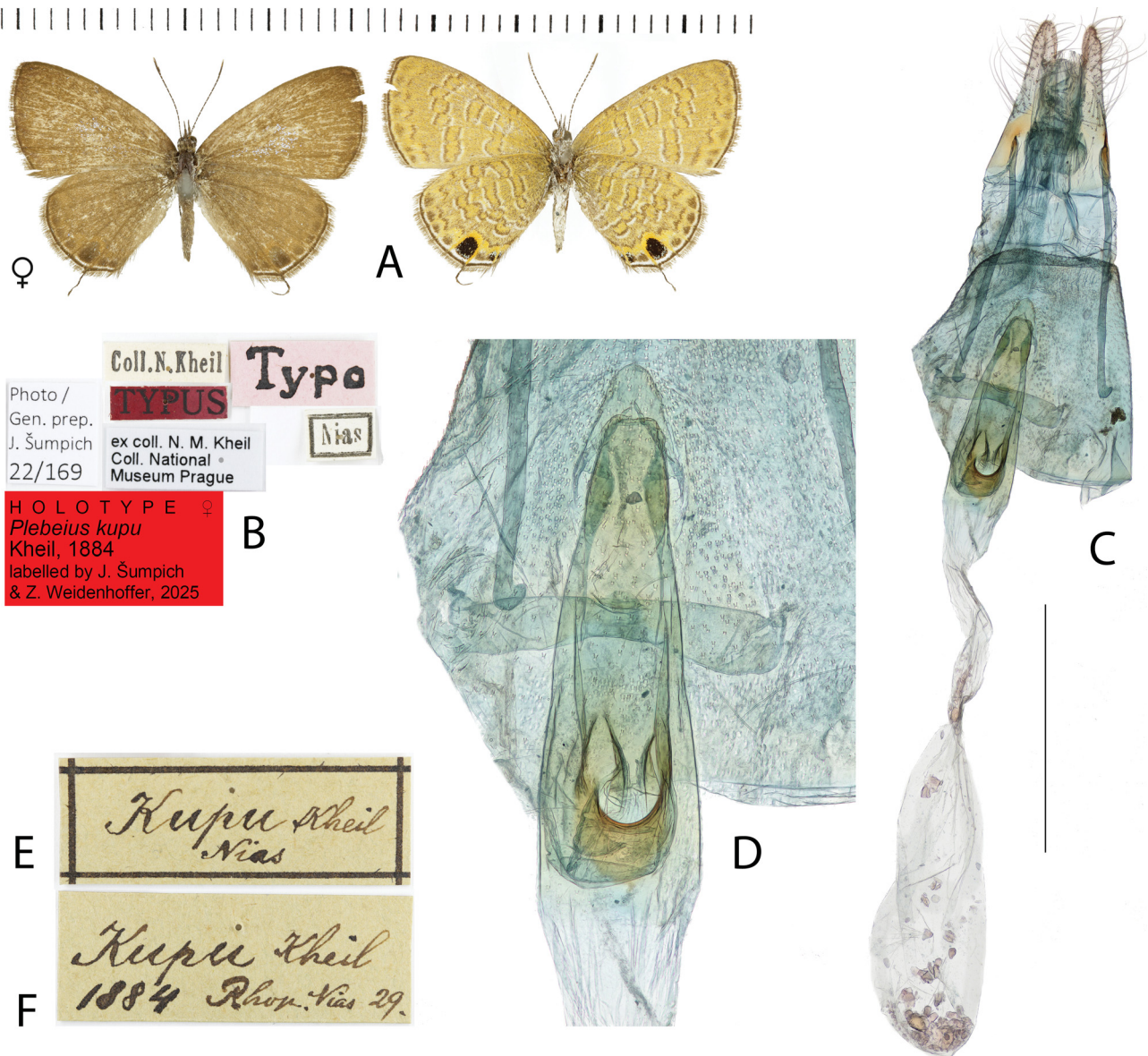


Fig. 7. *Plebeius kupu* Kheil, 1884, holotype, female. A – dorsal view (left), ventral view (right); B – labels; C–D – female genitalia, gen. prep. JŠ22169: C – general view, D – detail of antrum area; E–F – original labels handwritten by N. M. Kheil placed in his original collection box before the type series: F – reverse side of the label in Fig. 7E. Scale bar 10 mm.

Prosotas nora kupu (Kheil, 1884)

(Fig. 7)

Plebeius kupu Kheil, 1884: 29, fig. 34 (original description).

Nacaduba nora kupu: FRUHSTORFER (1916b): 117 (new status).

Prosotas nora kupu: TITE (1963): 92 (new combination).

Type material examined. HOLOTYPE: ♀ (NMPC), 'Typo [p, pink label] // Nias [p] // Typus [p, red label] // Coll. N. Kheil [p] // Photo / Gen. prep. / J. Šumpich / 22/169 [p] // ex coll. N. M. Kheil / Coll. National / Museum Prague [p] // Syntype ♀ / *Plebeius kupu* / Kheil, 1884 / labelled by J. Šumpich / & Z. Weidenhoffer, 2025 [p, red label]' (Fig. 7A).

Current status. *Prosotas nora kupu* (Kheil, 1884), subspecies of *Prosotas nora* (Felder, 1860).

Distribution. *Prosotas nora* is widely distributed in Southeast Asia, from Pakistan to Papua New Guinea, also in Australia (BRABY 2004, LEPIFORUM 2024). The known distribution of the subspecies *P. n. kupu* to date is restricted to the island of Nias.

Remarks. TITE (1963) in his work on this species noted: 'Type ? A specimen from the Fruhstorfer collection in the B.M. (N.H.) is labelled in Fruhstorfer's writing as the type', but the description of the species was based on a single specimen (KHEIL 1884) and the holotype is deposited in the NMPC.

The male genitalia of several subspecies of *P. nora* were depicted by FRUHSTORFER (1916b) and CORBET & PENDLEBURY (1992) but not the female genitalia. The genitalia of the subspecies *P. n. kupu* have not yet been depicted. The holotype of *P. nora kupu* is a female. Comparisons with female genitalia of related taxa could not be made because comparative material was not available. According to FRUHSTORFER (1916b), the subspecies *P. n. kupu* differs from the related subspecies *P. n. ardates* (Moore, [1875]) only in its lighter colour. For the moment, we accept the taxonomic status of the subspecies but we cannot exclude that *P. n. kupu* may be synonymous with some other subspecies of *P. nora*.

***Cupido lacturnus polysperchinus* (Kheil, 1884)**

(Fig. 8)

Plebeius polysperchinus Kheil, 1884: 29, fig. 36 (original description).*Evers polysperchinus*: SEITZ (1912–1927): 924 (new combination; Fruhstorfer given wrongly instead of Kheil as the author of the name *polysperchinus*).*Elkalyce lacturnus polysperchinus*: BECCALONI et al. (2003) (new combination).*Cupido lacturnus*: SAVELLA (2024) (new synonymum, new combination).**Type material examined.** SYNTYPES (8 ♂♂ 3 ♀♀, NMPC): 1 ♂, 'Nias [p] // Coll. N. Kheil [p] // Typus [p, red label] // ex coll. N. M. Kheil / Coll. National / Museum Prague [p] // Syntype ♂ / *Plebeius polysperchinus* / Kheil, 1884 / labelled by J. Šumpich / & Z. Weidenhoffer, 2025 [p, red label] // Photo / Gen. prep. / J. Šumpich / 22/170 [p]' (Fig. 8A).7 ♂♂, 'Nias [p] // Coll. N. Kheil [p] // ex coll. N. M. Kheil / Coll. National / Museum Prague [p] // Syntype ♂ / *Plebeius polysperchinus* / Kheil, 1884 / labelled by J. Šumpich / & Z. Weidenhoffer, 2025 [p, red label]'. One specimen was dissected and has label containing 'Photo / Gen. prep. / J. Šumpich / 24/082 [p]'.1 ♀, 'Nias [p] // Coll. N. Kheil [p] // ex coll. N. M. Kheil / Coll. National / Museum Prague [p] // Syntype ♀ / *Plebeius polysperchinus* / Kheil, 1884 / labelled by J. Šumpich / & Z. Weidenhoffer, 2025 [p, red label]'.1 ♀, 'Nias [p] // Coll. N. Kheil [p] // [small white label with illegible character] // ex coll. N. M. Kheil / Coll. National / Museum Prague [p] // Syntype ♀ / *Plebeius polysperchinus* / Kheil, 1884 / labelled by J. Šumpich / & Z. Weidenhoffer, 2025 [p, red label]' (Fig. 8B).1 ♀, 'Nias [p] // Coll. N. Kheil [p] // [small yellow label without text] // ex coll. N. M. Kheil / Coll. National / Museum Prague [p] // Syntype ♀ / *Plebeius polysperchinus* / Kheil, 1884 / labelled by J. Šumpich / & Z. Weidenhoffer, 2025 [p, red label]'.**Current status.** *Cupido lacturnus polysperchinus* (Kheil, 1884), subspecies of *Cupido lacturnus* (Godart, [1824]).**Distribution.** *Cupido lacturnus* is widely distributed in the Oriental Region, Australia and also in southern Japan. Subspecies *C. l. polysperchinus* is hitherto known only from Nias.**Remarks.** We accept subspecies status for the taxon *C. l. polysperchinus* according to BECCALONI et al. (2003), but in generic combination in *Cupido* Schrank, 1801 (SAVELLA 2024, Z. Fric, pers. comm.).***Acytolepis puspa puspinus* (Kheil, 1884)**

(Fig. 9)

Plebeius puspinus Kheil, 1884: 30, figs 37–39 (original description).*Cyaniris puspinus*: FRUHSTORFER (1910): 287 (new combination).*Lycaenopsis puspa puspinus*: FRUHSTORFER (1917b): 26 (new combination).*Acytolepis puspa puspinus*: ELIOT & KAWAZOÉ (1983): 179 (new combination).*Acytolepis puspa puspinus*: SAVELLA (2024) (taxonomic review).**Type material examined.** SYNTYPES (8 ♂♂ 8 ♀♀, NMPC): 1 ♂, 'Nias [p] // Coll. N. Kheil [p] // Typus [p, red label] // Orig. [p, pink label] // ex coll. N. M. Kheil / Coll. National / Museum Prague [p] // Syntype ♂ / *Plebeius puspinus* / Kheil, 1884 / labelled by J. Šumpich / & Z. Weidenhoffer, 2025 [p, red label] // Photo / Gen. prep. / J. Šumpich / 22/165 [p]' (Fig. 9A).1 ♂, 'Nias [p] // Coll. N. Kheil [p] // Typus [p, red label] // Orig. [p, pink label] // ex coll. N. M. Kheil / Coll. National / Museum Prague [p] // Syntype ♂ / *Plebeius puspinus* / Kheil, 1884 / labelled by J. Šumpich / & Z. Weidenhoffer, 2025 [p, red label]'.6 ♂♂, 'Nias [p] // Coll. N. Kheil [p] // ex coll. N. M. Kheil / Coll. National / Museum Prague [p] // Syntype ♂ / *Plebeius puspinus* / Kheil, 1884 / labelled by J. Šumpich / & Z. Weidenhoffer, 2025 [p, red label]'.

1 ♀, 'Nias [p] // Coll. N. Kheil [p] // Typus [p, red label] // Orig. [p, pink

label] // ex coll. N. M. Kheil / Coll. National / Museum Prague [p] // Syntype ♀ / *Plebeius puspinus* / Kheil, 1884 / labelled by J. Šumpich / & Z. Weidenhoffer, 2025 [p, red label] // Photo / Gen. prep. / J. Šumpich / 22/169 [p]' (Fig. 9B).7 ♀♀, 'Nias [p] // ex coll. N. M. Kheil / Coll. National / Museum Prague [p] // Syntype ♀ / *Plebeius puspinus* / Kheil, 1884 / labelled by J. Šumpich / & Z. Weidenhoffer, 2025 [p, red label]'. One female has very small green label without text.**Current status.** *Acytolepis puspa puspinus* (Kheil, 1884), subspecies of *Acytolepis puspa* (Horsfield, [1828]).**Distribution.** *Acytolepis puspa* is widely distributed in Southeast Asia (LEPIFORUM 2024); the occurrence of *A. p. puspinus* has been reported only from the island of Nias so far (FRUHSTORFER 1917b).**Subfamily Theclinae Swainson, 1831****Tribe Hypolycaenini Swinhoe, 1910*****Chliaria tora* (Kheil, 1884)**

(Fig. 10)

Hypolycaena tora Kheil, 1884: 31, fig. 40 (original description).*Chliaria amabilis tora*: SEITZ (1927): 981 (new combination).*Chliaria tora*: CORBET & PENDLEBURY (1956): 354 (new combination); BECCALONI et al. (2003) (checklist); SAVELLA (2024) (taxonomic review).*Hypolycaena tora tora*: D'ABRERA (1986): 620 (taxonomic review).**Type material examined.** SYNTYPES (1 ♂ 2 ♀♀, NMPC): 1 ♂, 'Nias [p] // Coll. N. Kheil [p] // ex coll. N. M. Kheil / Coll. National / Museum Prague [p] // Syntype ♂ / *Hypolycaena tora* / Kheil, 1884 / labelled by J. Šumpich / & Z. Weidenhoffer, 2025 [p, red label] // Photo / Gen. prep. / J. Šumpich / 22/149 [p]' (Fig. 10A).1 ♀, 'Nias [p] // Coll. N. Kheil [p] // Orig. [p, pink label] // ex coll. N. M. Kheil / Coll. National / Museum Prague [p] // Syntype ♀ / *Hypolycaena tora* / Kheil, 1884 / labelled by J. Šumpich / & Z. Weidenhoffer, 2025 [p, red label] // Photo / Gen. prep. / J. Šumpich / 22/154 [p]' (Fig. 10B).1 ♀, 'Nias [p] // ex coll. N. M. Kheil / Coll. National / Museum Prague [p] // Syntype ♀ / *Hypolycaena tora* / Kheil, 1884 / labelled by J. Šumpich / & Z. Weidenhoffer, 2025 [p, red label]'.**Current status.** *Chliaria tora* (Kheil, 1884), valid species.**Distribution.** Indonesia (Sumatra, Nias), Peninsular Malaysia (KUNTE 2015).**Remarks.** According to FRUHSTORFER (1914b), three subspecies are recognized in *Chliaria tora*. Besides the nominotypical subspecies, these are *C. t. phataea* Fruhstorfer, 1914 occurring in Sumatra and *C. t. mimima* Druce, 1895, known only from Mt. Kinabalu, Borneo. Later TAKANAMI (1989) transferred the taxon *minima* as a subspecies of *C. othona* (Hewitson, 1865).SAVELLA (2024) also listed two subspecies (besides the nominotypical subspecies), namely *C. t. phataea* Fruhstorfer, 1914 and *C. t. pumilina* van Eecke, 1918, both occurring in Sumatra. The status of *pumilina* seems to be unclear, as CORBET (1940) considers it a synonym of *C. t. phataea*. D'ABRERA (1986) follows this opinion with a question mark. VAN EECKE (1918) described *pumilina* as a subspecies of *C. tora* and compared it with the taxon *minima*, pointing in particular to the identically small wingspan (19 mm) and the similar pattern of the underside of the forewings. Although we have no comparative material available, on the basis of illustrations in literature it is substantiated to assume that *pumilina* is in fact a subspecies of *C. othona*, and its identity with *C. o. minima* cannot be ruled out.

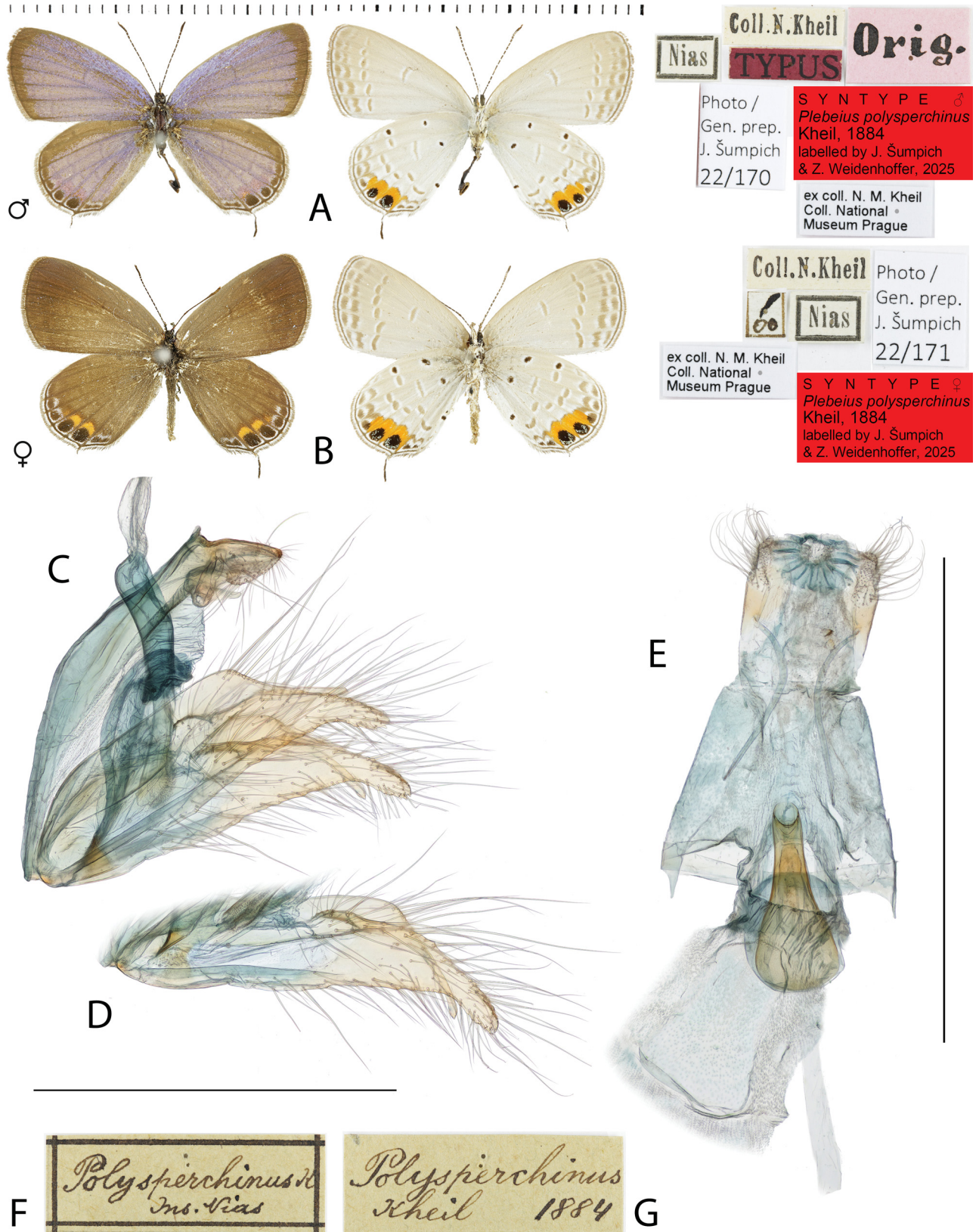


Fig. 8. *Plebeius polysperchinus* Kheil, 1884, syntypes. A – male, dorsal view (left), ventral view (center), labels (right); B – female, dorsal view (left), ventral view (center), labels (right); C–D – male genitalia, gen. prep. JŠ24082: C – lateral view, D – detail of valva in open position; E – female genitalia, gen. prep. JŠ24083; F–G – original labels handwritten by N. M. Kheil placed in his original collection box before the type series; G – reverse side of the label in Fig. 8F. Scale bar 1 mm.

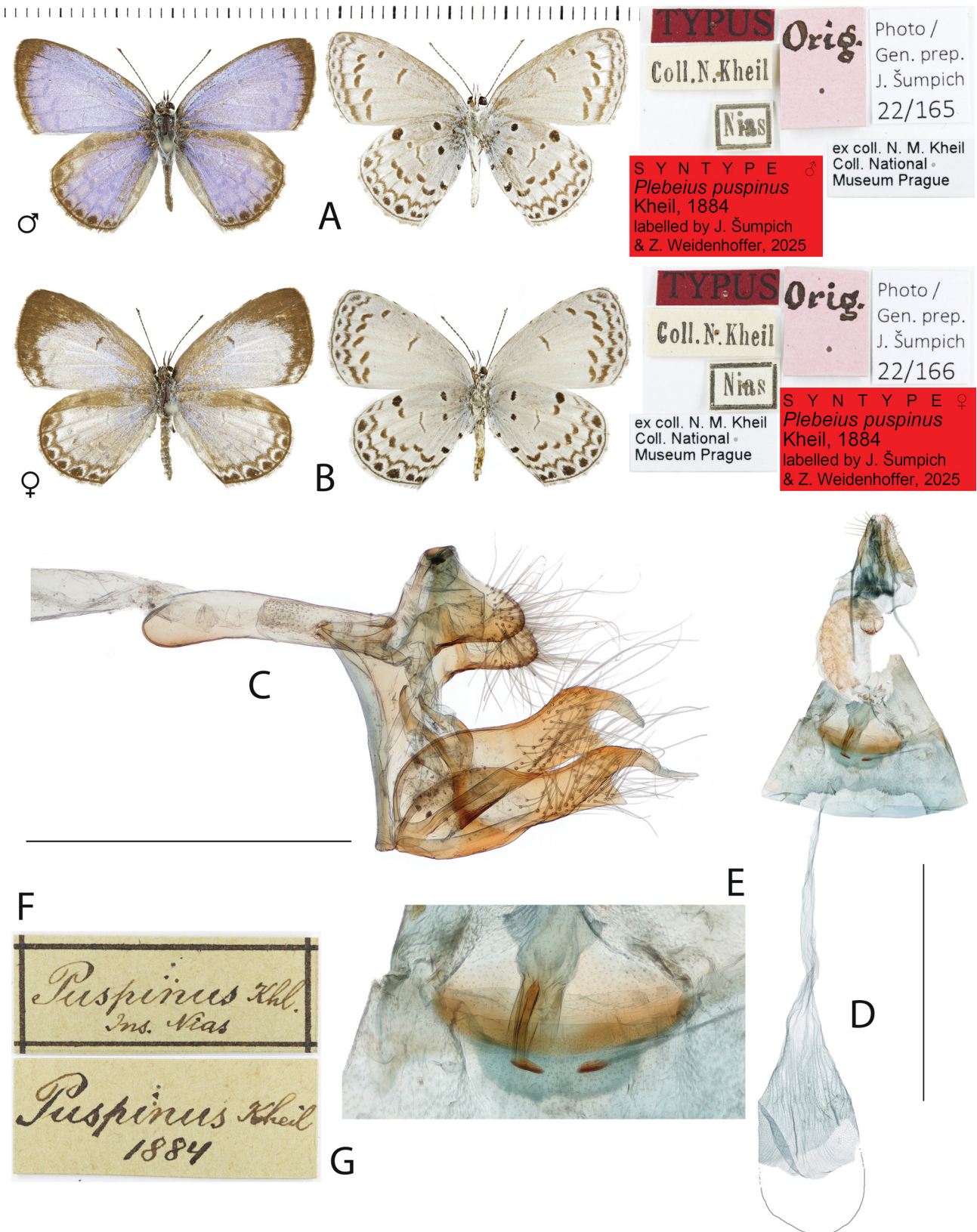


Fig. 9. *Plebeius puspinus* Kheil, 1884, syntypes. A – male, dorsal view (left), ventral view (center), labels (right); B – female, dorsal view (left), ventral view (center), labels (right); C – male genitalia, gen. prep. JŠ22165; D–E – female genitalia, gen. prep. JŠ22166: D – general view, E – detail of antrum area; F–G – original labels handwritten by N. M. Kheil placed in his original collection box before the type series; G – reverse side of the label in Fig. 9F. Scale bar 1 mm in C and 2 mm in D.

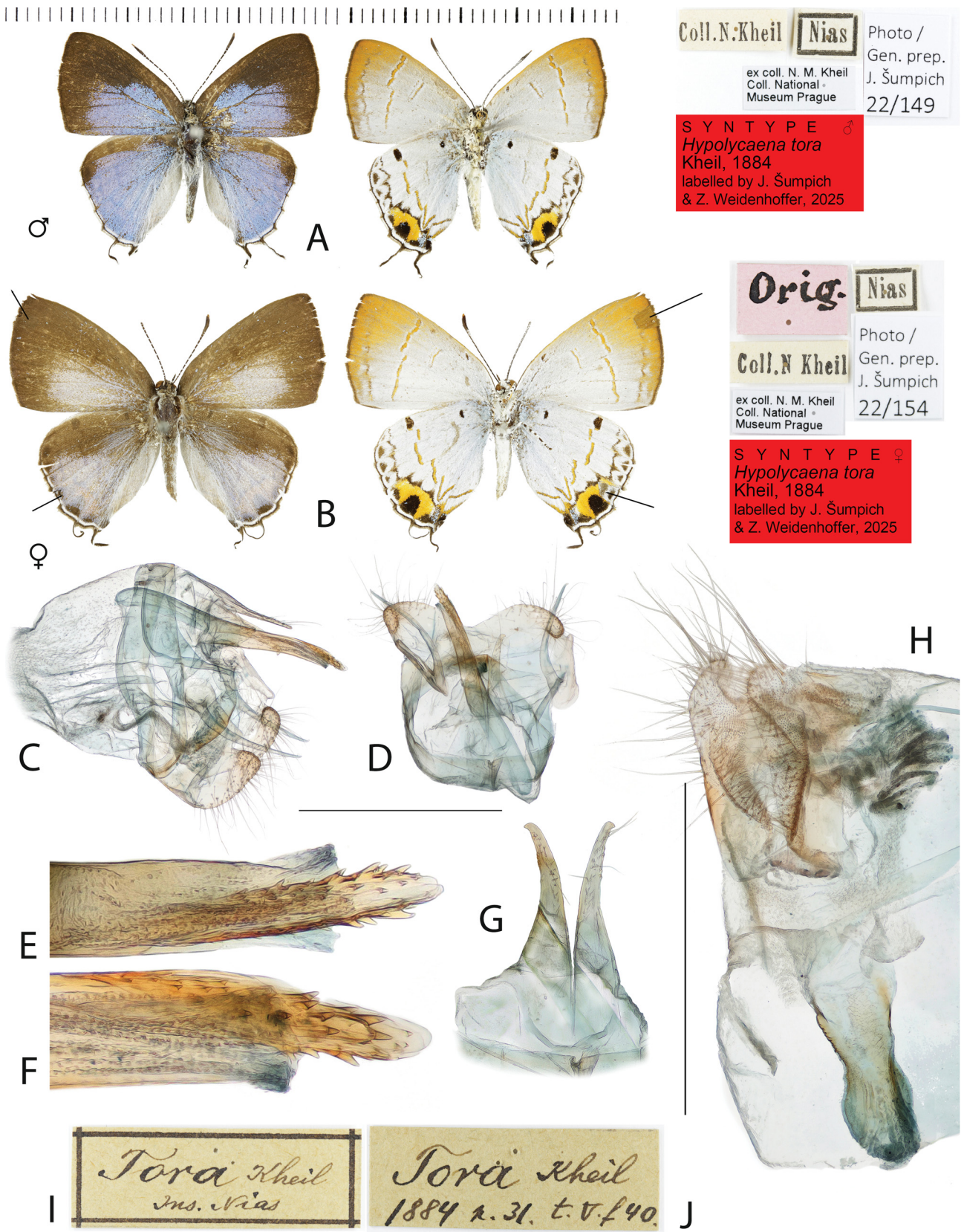


Fig. 10. *Hypolycaena tora* Kheil, 1884, syntypes. A – male, dorsal view (left), ventral view (center), labels (right); B – female, dorsal view (left), ventral view (center), labels (right) (arrows point to repaired wing parts); C–G – male genitalia, gen. prep. JŠ22149: C – lateral view, D – frontal view, E–F – detail of the end of the phallus, different views; G – claspers; H – female genitalia, gen. prep. JŠ22154; I–J – original labels handwritten by N. M. Kheil placed in his original collection box before the type series; J – reverse side of the label in Fig. 10I. Scale bar 1 mm in C, D and H.

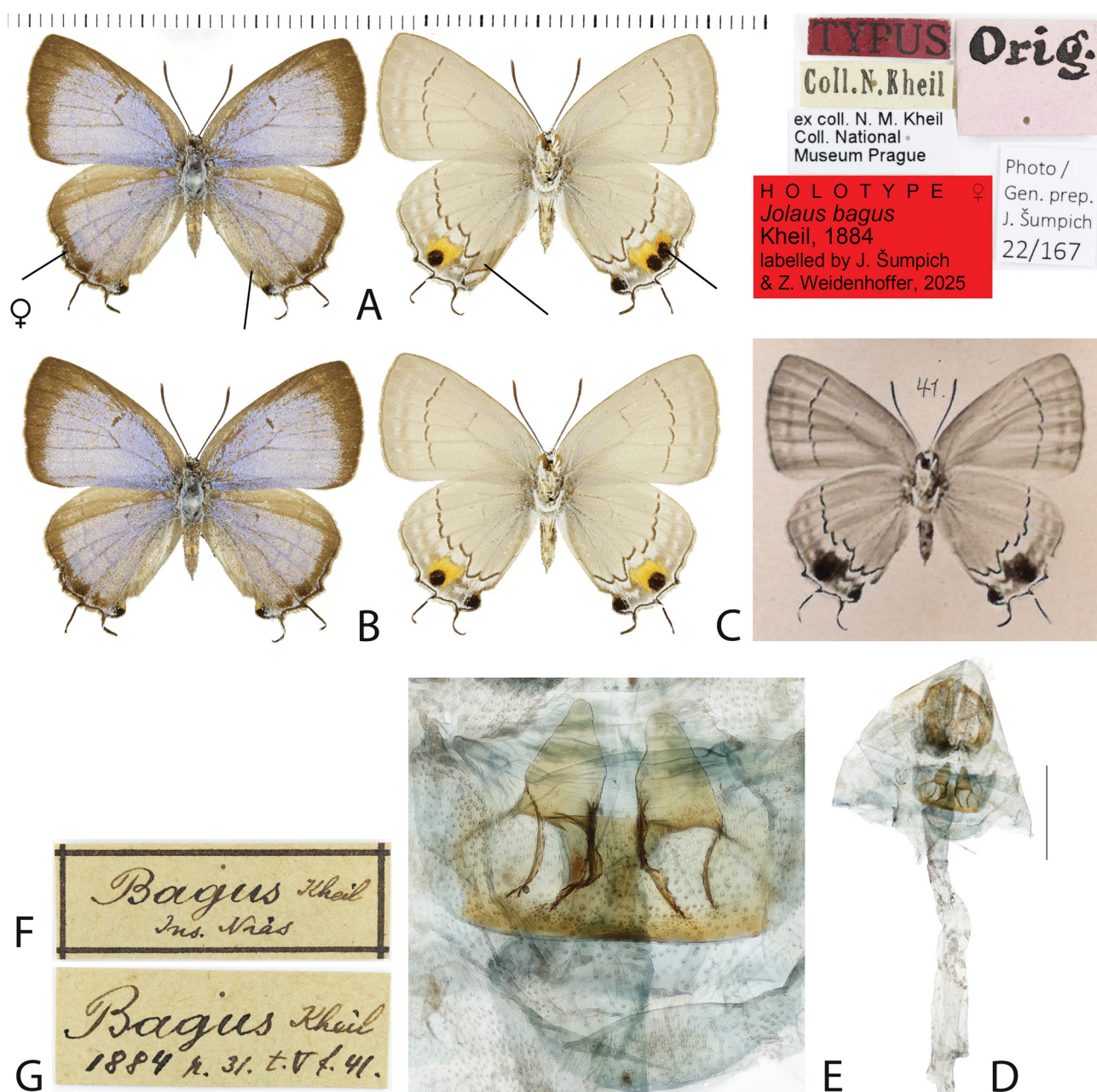


Fig. 11. *Jolaus bagus* Kheil, 1884, holotype, female. A – dorsal view (left), ventral view (center), labels (right) (arrows point to the repaired areas of the wings); B – the same specimen after the restoration; C – ventral view in the original description of KHEIL (1884); D–E – female genitalia, gen. prep. JŠ22167; D – general view, E – detail of sterigma; F–G – original labels handwritten by N. M. Kheil placed in his original collection box before the type series; G – reverse side of the label in Fig. 11F. Scale bar 1 mm.

Another subspecies of *C. tora* was described by CORBET (1940b), namely *C. t. semanga* Corbet, 1940. Later CORBET & PENDLEBURY (1992) considered the taxon *semanga* conspecific with *C. othona*, and established it as its subspecies. At the same time these authors showed photographs of *semanga* (CORBET & PENDLEBURY 1992: plate 49, figs 7–9). Their male corresponds to the male from the type series of *C. tora* (Fig. 10A); the female has no blue colour on the upper side of the forewings and fully fits the photograph of the syntype of *C. t. phataea* (cf. FRUHSTORFER 1914b, CORBET & PENDLEBURY 1992). We therefore consider it appropriate to return *semanga* to the subspecies level of *C. tora*. Based on the information available to us, we cannot rule out that *C. t. semanga* is in

fact identical with *C. t. phataea*.

Updated list of subspecies of *Chliaria tora*:

- Chliaria tora tora* (Kheil, 1884)
- Chliaria tora phataea* Fruhstorfer, 1914
- Chliaria tora semanga* Corbet, 1940, stat. restit.

***Tajuria bagus* (Kheil, 1884) stat. restit.**

(Fig. 11)

- Jolaus bagus* Kheil, 1884: 31, fig. 41 (original description).
- Tajuria cippus bagus*: FRUHSTORFER (1912): 211 (new combination).
- Tajuria cippus bagus* [sic!]: SEITZ (1912–1927): 972 (taxonomic review); D'ABRERA (1986): 612 (taxonomic review); SAVELLA (2024) (taxonomic review).
- Jolaus bagus*: BECCALONI et al. (2003) (checklist).

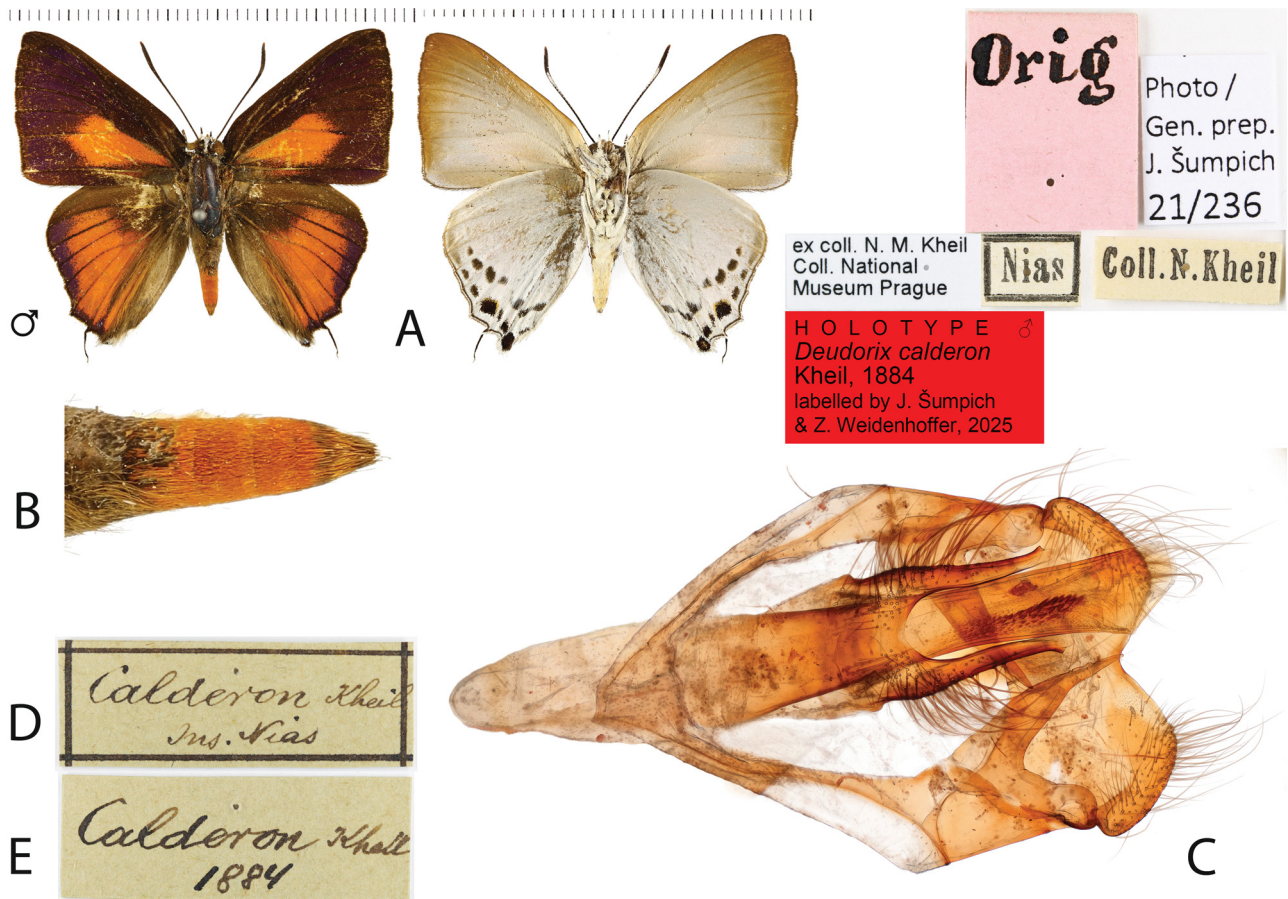


Fig. 12. *Deudorix calderon* Kheil, 1884, holotype, male. A – dorsal view (left), ventral view (center), labels (right); B – detail of the end of abdomen in dorsal view; C – male genitalia, gen. prep. JŠ21236; D–E – original labels handwritten by N. M. Kheil placed in his original collection box before the type series: E – reverse side of the label in Fig. 12D. Scale bar 2 mm.

Type material examined. HOLOTYPE: ♀ (NMPC), 'Nias [p] // Coll. N. Kheil [p] // Typus [p, red label] // Orig. [p, pink label] // ex coll. N. M. Kheil / Coll. National / Museum Prague [p] // Holotype ♀ / *Jolaus bagus* / Kheil, 1884 / labelled by J. Šumpich / & Z. Weidenhoffer, 2025 [p, red label] // Photo / Gen. prep. / J. Šumpich / 22/167 [p]' (Figs 11A–C).

Current status. *Tajuria bagus* (Kheil, 1884), stat. restit., valid species.

Distribution. Indonesia: Nias (KHEIL 1884).

Remarks. *Tajuria bagus* belongs to the least known taxa described by N. M. Kheil. The holotype has not yet been studied by anyone, which resulted in both misidentifications of some Indonesian material in other collections (e.g., WIKISPECIES 2019), but also its still unclear taxonomic status. FRUHSTORFER (1912) considered *bagus* a subspecies of *Tajuria cippus* (Fabricius, 1798) but only based on the pattern of the underside of the wings presented in Kheil's publication. Unfortunately, in print of Kheil's publication, the yellow paint on hindwings merged with the black, creating an artifact that greatly complicated the correct identification of this species (KHEIL 1884: fig. 41; Fig. 11C). The pattern on the underside of the wings of *T. bagus* is more similar to *Pratapa deva* (Moore, [1858]) than to *T. cippus*, but the appearance of the upper side is different from both named species and most resembles *T. isaeus amardus* Fruhstorfer, 1912, also described from

Nias (there are 14 specimens of both sexes in Kheil's collection, cf. KHEIL 1884). Due to its considerable differences from all nearby species, we consider *T. bagus* to be a good species.

In Kheil's work (KHEIL 1884), only the underside of the wings is depicted (Fig. 11C), where the repair of the right hindwing is visible at higher magnification, while the other hindwing appears to be in its original, undamaged condition. For more details compare the photos of the holotype in Fig. 11A with Fig. 11B, where the arrows point to the repaired parts of the wings.

Deudorix calderon Kheil, 1884, stat. restit.

(Fig. 12)

Deudorix calderon Kheil, 1884: 33, fig. 25 (original description).

Deudorix calderon: FRUHSTORFER (1912): 264 (taxonomic review); BRIDGES (1988): VIII.87 (catalogue).

Deudorix staudingeri calderon: SEITZ (1912–1927): 998 (new combination).

Type material examined. HOLOTYPE: ♂ (NMPC), 'Nias [p] // Coll. N. Kheil [p] // Orig. [p, pink label] // ex coll. N. M. Kheil / Coll. National / Museum Prague [p] // Holotype ♂ / *Deudorix calderon* / Kheil, 1884 / labelled by J. Šumpich / & Z. Weidenhoffer, 2025 [p, red label] // Photo / Gen. prep. / J. Šumpich / 22/167 [p]' (Fig. 12A).

Current status. *Deudorix calderon* Kheil, 1884, stat. restit., valid species.

Table 1. Summary of the present status of all the taxa reviewed in this paper.

KHEIL (1884)	Current combination	Taxonomic position
<i>Miletus lahomius</i>	<i>Allotinus lahomius</i>	valid species
<i>Allotinus aphocha</i>	<i>Allotinus unicolor aphocha</i>	valid subspecies
<i>Lucia fangola</i>	<i>Spalgis epeus fangola</i>	valid subspecies
<i>Plebeius talinga</i>	<i>Jamides talinga</i>	valid species
<i>Plebeius siraha</i>	<i>Jamides bochus siraha</i>	valid subspecies
<i>Plebeius kupu</i>	<i>Prosotas nora kupu</i>	valid subspecies
<i>Plebeius polysperchinus</i>	<i>Cupido lacturnus polysperchinus</i>	valid subspecies
<i>Plebeius puspinus</i>	<i>Acytolepis puspa puspinus</i>	valid subspecies
<i>Hypolycaena tora</i>	<i>Chliaria tora</i>	valid species
<i>Jolaus bagus</i>	<i>Tajuria bagus</i>	valid species
<i>Deudorix calderon</i>	<i>Deudorix calderon</i>	valid species

Distribution. Indonesia (Nias) (KHEIL 1884), Philippines (Palawan) (SCHRÖDER & TREADAWAY 2013), Myanmar, Thailand, Laos, China (Yunnan, Hainan) (INAYOSHI 1996–2024).

Remarks. KHEIL (1884) did not depict the underside of the holotype wings, which resulted in misplacement of the species as a subspecies of *D. staudingeri* Druce, 1895 by SEITZ (1912–1927). Paradoxically, *D. staudingeri* is 11 years younger than *D. calderon*. SAVELLA (2024) accepts this combination with a question mark; however, this mistake was already recognized by BRIDGES (1988) and perhaps that is why he listed *D. calderon* as a good species. SEKI et al. (1991) pointed out that *D. calderon* is likely conspecific with *D. hypargyria* (Elwes, 1893), but similarly as in the previous case, Kheil's description is older (!). Unfortunately, we do not have comparative material of *D. hypargyria*, but adults of that taxon were depicted by ELWES (1893) and CORBET & PENDLEBURY (1992); the upper and underside of this species, and live butterflies from nature as well are depicted also by INAYOSHI (1996–2024). We see no difference in external appearance between *D. hypargyria* and the holotype of *D. calderon*, and especially in photos of live males from Thailand, the orange end of the abdomen, which is typical of *D. calderon*, is also very visible. We therefore have a good reason to follow the opinion of SEKI et al. (1991) and consider *D. hypargyria* to be a subspecies of *D. calderon*.

Deudorix strephanus Druce, 1896 was described as a separate species from Mt. Kinabalu, Borneo. In the original paper, the number of specimens of the type series is not specified and the description appears to have been based on a single male; therefore, TAKANAKI (1989) designated a lectotype, instead of holotype. SAVELLA (2024) considers *strephanus* to be a good species, but SEKI et al. (1991) classify it as a subspecies of *D. hypargyria* and point out a possible conspecificity with *D. calderon*. We agree with the opinion of SEKI et al. (1991) and transfer *D. hypargyria strephanus* as the subspecies of *D. calderon*.

Deudorix hypargyria annawarneckae Schröder & Treadaway, 2013, described from the Palawan island in

the Philippines, has so far been the only subspecies of *D. hypargyria* (SCHRÖDER & TREADAWAY 2013, SAVELLA 2024). As a result of the change in taxonomic status of *D. hypargyria*, *D. h. annawarneckae* should be transferred to the subspecies level of *D. calderon*.

Updated list of subspecies of *Deudorix calderon*:

Deudorix calderon calderon Kheil, 1884, stat. restit.

Deudorix calderon annawarneckae (Schröder & Treadaway, 2013), stat. nov.

Deudorix calderon hypargyria (Elwes, 1893), stat. nov.

Deudorix calderon strephanus (Druce, 1896), stat. nov.

Discussion

More than 140 years have passed since N. M. Kheil (KHEIL 1884) described the 11 taxa of Lycaenidae from Nias discussed in this study. During this time, many changes have occurred in taxonomy, systematics, and nomenclature across all Lepidoptera groups, not excluding tropical butterflies. Although N. M. Kheil provided photographs of adults for all the described species in his work, which was exceptional at that time, not all species could be reliably identified on the basis of black and white photographs and brief descriptions. Moreover, the information about the storage of Kheil's Lepidoptera collection in the National Museum of the Czech Republic remained unknown to many lepidopterologists, because during the lifetime of N. M. Kheil it was expected that his collection would be deposited in the Museo Nacional de Ciencias Naturales in Madrid after his death. However, only the collection material obtained during an extensive expedition in the vicinity of Cabo de San Juan in the mainland of the Río Muni in Equatorial Guinea (BOLIVAR 1910), from which N. M. Kheil described five new species, was deposited in Madrid. The present work is mainly aimed at providing relevant background for future studies. We are aware that further progress in the field of taxonomy and systematics, including a use of molecular data, is very likely to bring new insights into the taxonomic position of (not only) Kheil's taxa. Currently, all of the 11 species described by

Kheil from Nias are valid, five remain at the species level and six have been transferred to the subspecies level of another species. Only one species, *D. calderon*, remains in its original generic combination. A brief summary of the original and present status of all the taxa is provided in Tab 1.

Acknowledgements

We would like to thank both reviewers, namely Zdeněk Faltýnek Fric (Institute of Entomology ASCR, Department of Ecology and Conservation Biology, České Budějovice) and Shinichi Nakahara (Department of Organismic and Evolutionary Biology, Museum of Comparative Zoology, Harvard University, Cambridge, USA) for critical comments to the manuscript, Petr Kment (National Museum of the Czech Republic) and Jitka Ansari (London, United Kingdom) for English language corrections. This work was supported by the Ministry of Culture of the Czech Republic (DKRVO 2024–2028/5.1.b, National Museum of the Czech Republic, 00023272).

References

- BECCALONI G., SCOBLE M., KITCHING I., SIMONSEN T., ROBINSON G., PITKIN B., HINE A. & LYAL C. (eds) 2003: *The Global Lepidoptera Names Index (LepIndex)*. World Wide Web electronic publication. <https://www.nhm.ac.uk/our-science/data/lepindex/> [Accessed 28.xi.2024].
- BEZDĚK A. & HÁJEK J. 2009: Catalogue of type specimens of beetles (Coleoptera) deposited in the National Museum, Prague, Czech Republic. *Acta Entomologica Musei Nationalis Pragae* **49** (1): 349–378.
- BOLIVAR I. 1910: Materiales para el conocimiento de la Fauna de la Guinea Española. *Memorias de la Real Sociedad Española de Historia Natural* **1**: 161–181.
- BRABY M.F. 2004: *The Complete Field Guide to Butterflies of Australia*. CSIRO Publishing, Collingwood, VIC., 339 pp.
- BRIDGES C. A. 1988: *Catalogue of the Family-Group, Genus-Group and Species-Group Names of the Lycaenidae & Riodinidae of the World*. A. C. Bridges, Urbana, Illinois, 1128 pp.
- CORBET A. S. 1939: A revision of the Malayan species of *Allotinus* Felder & Felder (Lepidoptera: Lycaenidae). *Transactions of the Royal Entomological Society of London* **89**: 63–78.
- CORBET A. S. 1940a: A revision of the Malayan species of *Logania* Dist. (Lepidoptera: Lycaenidae). *Proceedings of the Royal Entomological Society of London (B)* **9**: 111–112.
- CORBET A. S. 1940b: A revision of the Malayan species of *Chliaria*. (Lepidoptera: Lycaenidae). *Proceedings of the Royal Entomological Society of London (B)* **9**: 90–92.
- CORBET A. S. & PENDLEBURY H. M. 1956: *The Butterflies of Malay Peninsula*. 2nd edition. Revised by A.S. Corbet and edited by N.D. Riley. Oliver and Boyd, Edinburgh and London, 537 pp., 55 pl.
- CORBET A. S. & PENDLEBURY H. M. 1992: *The Butterflies of the Malay Peninsula*. Malayan Nature Society, Kuala Lumpur, 595 pp, 69 plates.
- D'ABRERA B. 1986: *Butterflies of the Oriental Region. Part III. Lycaenidae & Riodinidae*. Hill House, Melbourne, 672 pp.
- DE NICÉVILLE L. 1895: On new and little-known Lepidoptera from the Indo-Malayan Region. *Journal of the Bombay Natural History Society* **10**: 13–40, 169–194.
- DRUCE H. H. 1895: A monograph of the Bornean Lycaenidae. *Proceedings of the Zoological Society of London* **1895**: 556–627.
- DURDIK P. 1884: Erklärung. *Stettiner Entomologische Zeitung* **45**: 400.
- ELIOT J. N. 1973: The higher classification of the Lycaenidae (Lepidoptera): a tentative arrangement. *Bulletin of the British Museum (Natural History) (Entomology)* **28**: 373–505, 162 figs.
- ELIOT J. N. 1986: A review of the Miletini (Lepidoptera: Lycaenidae). *Bulletin of the British Museum (Natural History) (Entomology)* **53**: 1–105, 108 figs.
- ELIOT J. N. & KAWAZOÉ A. 1983: *Blue butterflies of the Lycaenopsis group*. British Museum (Natural History), London, 309 pp.
- ELWES H. J. 1893: On butterflies collected by Mr. W. Doherty in the Naga and Karen Hills and in Perak. Part II. *Proceedings of the Zoological Society of London* **4** [1892]: 617–664.
- FELDER C. & FELDER R. [1865]: Rhopalocera Reise Fregatte Novara. In: FELDER C. & FELDER R. [1864–1867]: *Reise der österreichischen Fregatte Novara um die Erde in den Jahren 1857, 1858, 1859 unter den Behilfen des Commodore B. von Wüllerstorff-Urbair. Zoologischer Theil. Band 2*. Carl Gerold's Sohn, Wien, 6 + 548 pp., 137 pls.
- FELDER R. & ROGENHOFER A. F. 1875: Lepidoptera. Heft IV, V. Atlas der Heterocera Spingida. Noctuida. *Reise der Österreichischen Fregatte Novara um die Erde in den Jahren 1857, 1858, 1859 unter den Befehlen des Commodore B. von Wüllerstorff-Urbair. Zoologischer Theil. Band 2 (Abtheilung 2)*. [1874–1875], pp. 1–548.
- FRUHSTORFER H. 1910: Neue *Cyaniris*-Rassen und Übersicht der bekannten Arten. *Stettiner Entomologische Zeitung* **71** (2): 282–305.
- FRUHSTORFER H. 1912: Übersicht der Lycaeniden des Indo-Australischen Gebietes. Begründet auf die Ausbeute und die Sammlung des Autors. *Berliner Entomologische Zeitschrift* **56**: 197–272.
- FRUHSTORFER H. 1914a: Übersicht der Gerydinae und Diagnosen neuer oder verkannter Formen. *Zeitschrift für Wissenschaftliche Insektenbiologie* **10**: 20–25.
- FRUHSTORFER H. 1914b: Neue Lycaeniden. *Deutsche Entomologische Zeitschrift Iris* **27** (4): 172–178.
- FRUHSTORFER H. 1916a: *Gattungen Gerydus, Allotinus, Logania*. Pp. 803–823. In: SEITZ A.: *Die Gross-Schmetterlinge der Erde 9*. Alfred Kernen, Stuttgart, 1197 pp.
- FRUHSTORFER H. 1916b: Revision der Gattung *Nacaduba* auf Grund der Morphologie der Generationsorgane. *Zoologische Mededeelingen (Leiden)* **2** (14): 103–140.
- FRUHSTORFER H. 1917a: *Spalgis*, eine bicontinentale Lycaenidengattung. *Archiv für Naturgeschichte* **83A** (1): 73–76.
- FRUHSTORFER H. 1917b: Revision der Lycaenidengattung *Lycaenopsis* auf Grund morphologischer Vergleiche der Klammerorgane. *Archiv für Naturgeschichte* **82A** (1): 1–42, 2 pls.
- HIROWATARI T. 1986: Study on the genus *Jamides* (Lepidoptera, Lycaenidae). *Tyo to Ga* **36** (3): 113–132.
- HOVORKA T. & MACEK J. 2024: Catalogue of type specimens of the superfamily Diaprioidea (Hymenoptera) deposited in the National Museum of the Czech Republic. *Acta Entomologica Musei Nationalis Pragae* **64** (2): 501–557.
- INAYOSHI Y. 1996–2024: *A check list of Butterflies in Indo-China, chiefly from Thailand, Laos & Vietnam*. <https://yutaka.it-n.jp/lyc2/80420001.html> [Accessed 11 November 2024].
- ICZN 1999: *International Code of Zoological Nomenclature. Fourth edition*. International Trust for Zoological Nomenclature, London, 306 pp.
- KHEIL N. M. 1884: *Zur Fauna des Indo-Malaysischen Archipels. Die Rhopalocera der Insel Nias*. Napoleon Manuel Kheil, Prag, 38 pp + 5 tab.
- KHEIL N. M. 1905: Lepidópteros de la Guinea Española. Primera parte. *Memorias de la Real Sociedad Española de Historia Natural* **1** (7): 161–181.
- KHEIL N. M. 1909: Lepidópteros de la Guinea Española. Segunda parte. *Memorias de la Real Sociedad Española de Historia Natural* **1** (28): 483–506.
- KUNTE K. 2015: A new species of *Hypolycaena* (Lepidoptera: Lycaenidae) from Arunachal Pradesh, north-eastern India. *Journal of Research on the Lepidoptera* **48**: 21–27.
- LEPIFORUM 2024: *Bestimmungshilfe für die in Europa nachgewiesenen Schmetterlingsarten*. Online at <http://lepiforum.org/wiki/taxonomy/> [Accessed 30 November 2024].
- MOORE F. 1884: Descriptions of some new Asiatic diurnal Lepidoptera; chiefly from specimens contained in the Indian Museum, Calcutta. *Journal of the Asiatic Society of Bengal* **53**: 16–52.
- NAKAHARA S., WILLMOTT K. R., MIELKE O. H. H., SCHWARTZ J., ZACCA T., ESPELAND M. & LAMAS G. 2018: Seven new taxa

- from the butterfly subtribe Euptychiina (Lepidoptera: Nymphalidae: Satyrinae) with revisional notes on *Harjesia* Forster, 1964 and *Pseudeuptychia* Forster, 1964. *Insecta Mundi* **639**: 1–38.
- POSPÍŠILOVÁ D., HLADKÁ I. & JEZBEROVÁ A. 2010: *Pavel Durdík (1843–1903), Life and Work. Ethnological Collection of the Island of Nias*. Národní muzeum, Praha, 120 pp.
- RILEY N. D. & CORBETA S. 1938: A revision of the Malayan species of *Jamides* Hübner (Lepidoptera: Lycaenidae). *Transactions of the Entomological Society of London* **87** (5): 147–159.
- SAVELLA M. 2024: *Lepidoptera and some other life forms*. Online at <https://www.funet.fi/pub/sci/bio/life/insecta/lepidoptera/> [Accessed 25 November 2024].
- SCHILDE J. 1884: Die Rhopalocera der Insel Nias. Beitrag zur Kenntniss des indo-malayischen Archipels. Von Nap. M. Kheil in Prag. Mit Einleitung und beschreibendem Text nebst 5 photographischen Tafeln. *Stettiner Entomologische Zeitung* **45**: 398–399.
- SCHRÖDER H. G. & TREADAWAY C. G. 2013: Zur Kenntnis philippinischer Lycaenidae, 17 (Lepidoptera). *Nachrichten des Entomologischen Vereins Apollo* **34**: 61–64.
- SEITZ A. 1912–1927: *Everes*. Pp. 923–924. *Deudorix*. Pp. 998–1001. In: *Die Gross-Schmetterlinge der Erde 9. Die Indo-Australische Tagfalter 2*. Fritz Lehmann Verlag, Stuttgart, 1197 pp.
- SEKI Y., TAKANAMI Y. & OTSUKA K. 1991: *Butterflies of Borneo. Vol. 2. No. 1. Lycaenidae*. Tobishima Corporation, Tokyo, 114 pp.
- ŠUMPICH J. & WEIDENHOFFER Z. 2023: Ke 100. výročí úmrtí Napoleona Manuela Kheila – světového entomologa a významného donátora Národního muzea v Praze. (On the 100th anniversary of the death of Napoleon Manuel Kheil – world-class entomologist and important donor of the National Museum in Prague). *Journal of the National Museum (Prague), Natural History Series* **192**: 147–156 (in Czech, English summary).
- TAKANAMI Y. 1989: On some type specimens of Lycaenidae from South East Asia. *Tyô to Ga* **40** (1): 23–80.
- TITE G. E. 1963: A synonymic list of the genus *Nacaduba* and allied genera. *Bulletin of the British Museum (Natural History) (Entomology)* **13** (4): 69–116.
- VAN EECKE R. 1918: Studies on Indo-Australian Lepidoptera--III. Some Rhopalocera and Netrocera [sic] from Simalur, Pulu Lasia, Pulu Babi and Sumatra. *Zoologische Mededelingen* **4** (7): 70–101.
- VIVES MORENO A. 2019: Los tipos de Lepidoptera descritos por Napoleón Manuel Kheil (1905 y 1909) de la Guinea española (Insecta: Lepidoptera). *SHILAP Revista de Lepidopterología* **47**: 161–170.
- WIKISPECIES 2019: *Tajuria cippus bagus*. Online at https://species.wikimedia.org/wiki/Tajuria_cippus_bagus [Accessed 30 November 2024].

